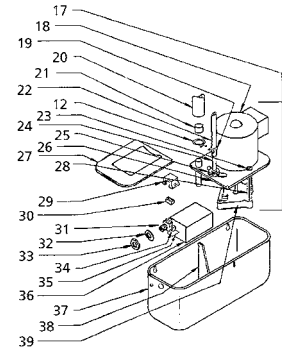
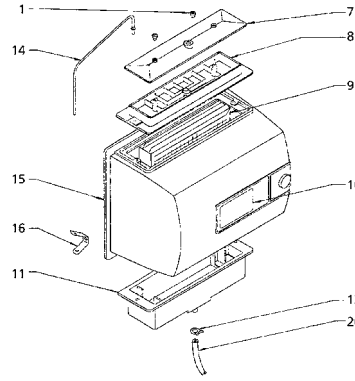
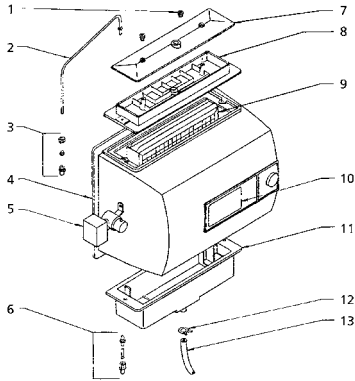


Models 1042, 1042L, 1042LH and 1042R



| Item | Qty. Req'd | GFI Number | Description of Part | LIST / RETAIL |
|------|------------|------------|--|---------------|
| | | | | PRICE EACH |
| 1 | 8 | 7043 | 1099-9 Thumb nut | \$2.00 |
| 2 | 1 | 7364 | 1042-5 Distributor tube for 1042 L/LH | \$14.66 |
| 3 | 1 | 7158 | P103,104,111 Connector fittings | \$2.50 |
| 4 | 1 | 7363 | 1042-4 Cabinet assembly - 115V | \$130.00 |
| | | 7368 | 1042-16 Cabinet assembly - 24V | \$130.00 |
| 5 | 1 | 7013 | 990-52 Solenoid valve assembly -115V for 1042 (includes fittings) | \$126.32 |
| | | 7014 | 990-53 Solenoid valve assembly -24V for 1042 L/LH (includes fittings) | \$76.41 |
| 6 | 1 | 7008 | 990-37-76 Orifice and strainer assembly (std. water pressure 40 - 120 psi) | \$6.45 |
| | | 7009 | 990-37-75 Orifice and strainer assembly (low water pressure 20 - 40 psi) | \$6.45 |
| | | 7005 | 990-17 Strainer | \$.66 |
| 7 | 1 | 7332 | 1137-35 Trough cover assembly | \$12.50 |
| 8 | 1 | 7333 | 1137-4 Distributor trough | \$28.00 |
| 9 | 1 | 7002 | 990-13 Evaporator pad 9-3/4"W x 11-3/4"H | \$20.97 |
| 10 | 1 | 7366 | 1042-10 Inspection name plate | \$3.00 |
| 11 | 1 | 7347 | 1137-3 Drain pan | \$30.00 |
| 12 | | 7162 | P163 Hose clamp (for 1099-16) | \$.75 |
| 13 | 1 | 7046 | 1099-16 Drain tube (15' of 5/8" I.D.) | \$20.00 |
| 14 | 1 | 7365 | 1042-6 Distributor tube - R | \$14.66 |
| 15 | 1 | 7369 | 1042-17 Cabinet assembly (1042-R) | \$122.00 |
| 16 | 1 | 6016 | 975-35 Distributor tube bracket | \$1.66 |
| 17 | | 6018 | 975-45 Pump, motor and lid assembly | \$185.00 |
| 18 | 1 | 6015 | 975-33 Pump Motor | \$120.00 |
| 19 | 2 | 6034 | P115 Hose clamp (for 975-34) | \$.50 |
| 20 | | 7348 | 1137-48 Drain tube - R (2-1/2' of 5/8" I.D.) | \$4.50 |

| Item | Qty. Req'd | GFI Number | Description of Part | LIST / RETAIL |
|------|------------|------------|---|---------------|
| | | | | PRICE EACH |
| 21 | 1 | 6040 | 975-43 Drain tube adapter | \$.50 |
| 22 | | 6019 | 975-34 Water supply tubing (4' of 5/16" I.D., R model only) | \$3.66 |
| 23 | 3 | 6033 | P120 Motor mount grommet | \$.95 |
| 24 | 1 | 6014 | 975-29 Standpipe | \$14.66 |
| 25 | 1 | 6035 | P116 Standpipe nut | \$.75 |
| 26 | 1 | 6010 | 975-16 R.H. lid assembly | \$18.33 |
| 27 | 1 | 6009 | 975-13 L.H. lid assembly | \$8.50 |
| 28 | 3 | 6017 | 975-41 Pump mounting stud | \$6.00 |
| 29 | 1 | 6007 | 975-10 Float valve assembly | \$24.20 |
| | | 6005 | 975-6 Valve shield | \$.99 |
| 30 | 1 | 6004 | 975-1 Valve seat | \$.50 |
| 31 | 1 | 7122 | 727-24 Orifice fitting | \$6.50 |
| 32 | 1 | 6036 | P117 Orifice washer | \$.40 |
| 33 | 1 | 6001 | 975-3 Orifice nut | \$.75 |
| 34 | 1 | 6026 | P118 Cotter pin | \$.95 |
| 35 | 1 | 7121 | 727-34 Float arm | \$5.00 |
| 36 | 1 | 7119 | 727-32 Float | \$8.50 |
| 37 | | 6008 | 975-48 Reservoir and baffle assembly | \$74.00 |
| 38 | 1 | 6020 | 975-12 Reservoir baffle | \$2.00 |
| 39 | 1 | 6011 | 975-17 Pump housing - bottom | \$1.50 |
| | | 6012 | 975-18 Pump housing - top | \$1.50 |
| | | 6013 | 975-49 Impeller and impeller screw | \$2.00 |

PARTS NOT SHOWN

| | | | | |
|--|---|------|--|----------|
| | 1 | 8022 | 800-UST Self-tapping saddle valve kit | \$11.00 |
| | 1 | 7015 | M3 Humidistat (24V for L and LH) | \$42.00 |
| | 1 | 7118 | 727-58 24V transformer (12VA) | \$22.00 |
| | 1 | 7367 | 1042-15 Parts bag (1042, L and LH) | NLA |
| | 1 | 7373 | 1042-80 Parts Bag with Solenoid 24V | \$100.00 |
| | 6 | 7345 | 1137-15 Stud | \$.82 |
| | 4 | 7140 | 40-7 Speed nut | \$.66 |
| | | 8035 | 8035 Humidex tablets | \$12.00 |
| | 1 | 7359 | 1042-11 Damper Knob | \$4.00 |
| | 1 | 7358 | 1042-3 Damper Assembly (Includes washer and 990-69 spring) | \$8.00 |

2% 10th Prox. Net 30 Days. F.O.B. Novi, Michigan

General Filters Inc. 43800 Grand River Novi, Michigan 48375-1115 Toll Free (866) 476-5101 Fax (248) 349-2366
www.GeneralAire.com