

PERFORATED SPIRAL DUCT

PERFORATED ALUMINUM FACE WITH 5/32" DIAMETER HOLES ON 3/16" CENTERS IN 60° STAGGERED ROWS 3/32" ON CENTER.

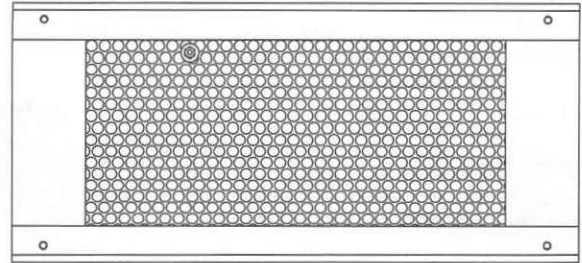
MINIMUM SIZE: 10" X 3"

MAXIMUM SIZE: 48" X 12"

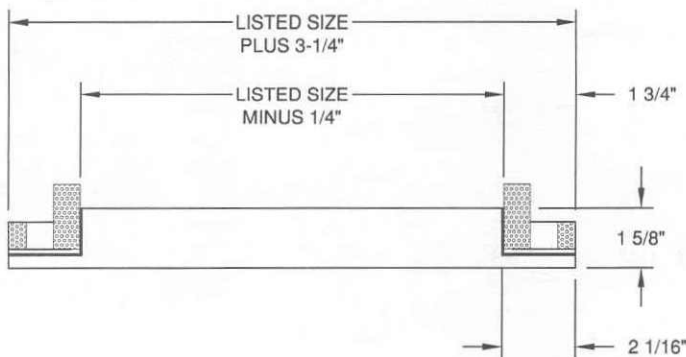
EXTRUDED ALUMINUM; 6063-T5

FINISH - SA (SATIN ANODIZE) OR W (WHITE PAINTED)

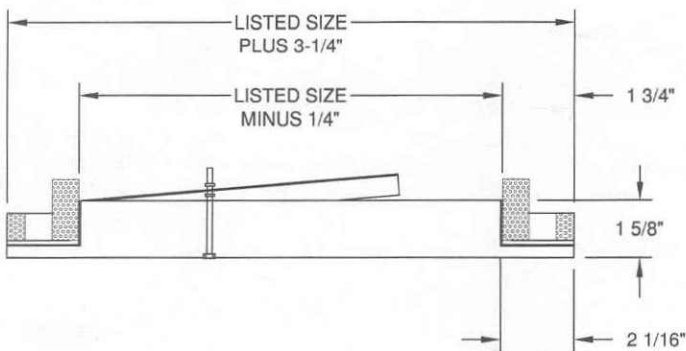
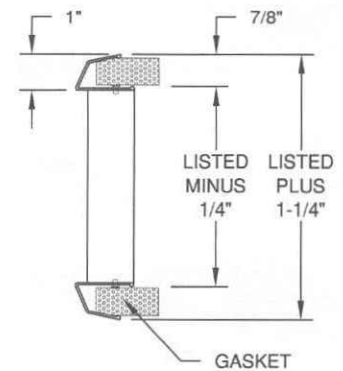
OPTIONAL AIR SCOOP WITH SCREW ADJUSTMENT



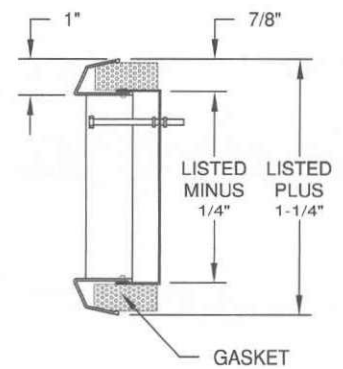
FACE VIEW



MODEL - USPF



MODEL - USPF-AS



DWG NO. 02HV206	JOB NAME: _____	ENGINEER: _____
DATE: 10/11/02	LOCATION: _____	CONTRACTOR: _____
	ARCHITECT: _____	FINISH: _____