

SUBMITTAL SHEET



N° PSML

Perforated Face Supply Diffuser Fixed face - directional louvers deflectors

Material: Stamped heavy gauge steel back panel. Coated steel perforated face with 3/16" diam. round holes on 1/4" staggered centers, affords 53% free area.

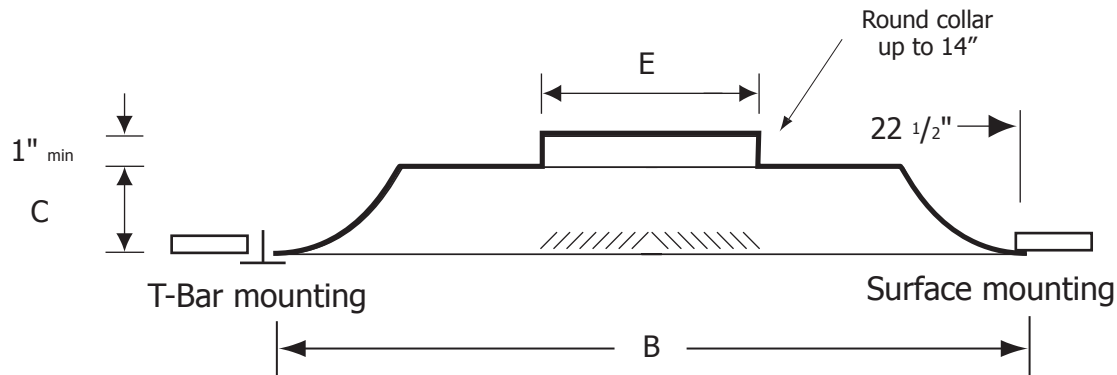
Finish: Powder paint coating - white.

Air pattern: Fixed horizontal 360° diffusion.

Mounting: Lay-in T-bar ceiling.



PSML



✓	Model #	Duct Size	E	Face Dim B x B	C
	PSML 2406	6	5 7/8"	23 3/4" x 23 3/4"	2 7/8"
	PSML 2408	8	7 7/8"	23 3/4" x 23 3/4"	2 7/8"
	PSML 2410	10	9 7/8"	23 3/4" x 23 3/4"	2 7/8"
	PSML 2412	12	11 7/8"	23 3/4" x 23 3/4"	2 7/8"
	PSML 2414	14	13 7/8"	23 3/4" x 23 3/4"	2 7/8"

Job: _____

Architect: _____

Engineer: _____

Contractor: _____

All dimensions in inches

Rev. 4