

# SUBMITTAL SHEET



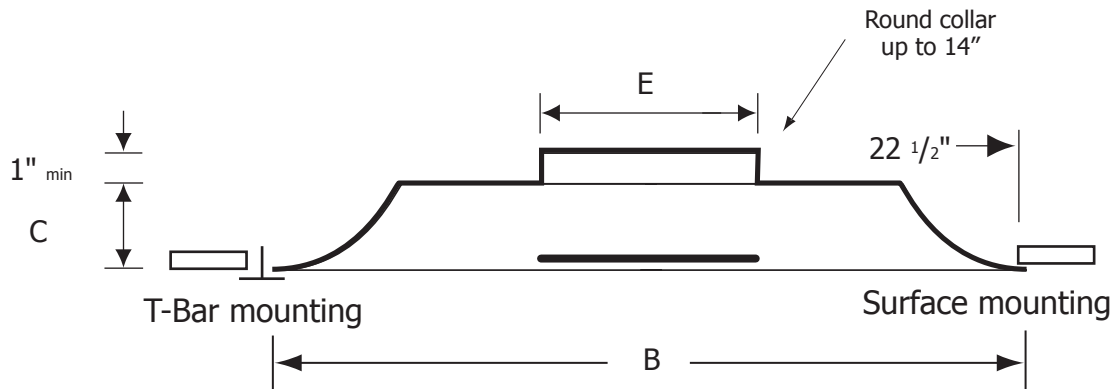
N° PSM

## Perforated Face Supply Diffuser Fixed face - baffle deflector

- Material:** Stamped heavy gauge steel back panel.  
Coated steel perforated face with 3/16" diam. round holes on 1/4" staggered centers, affords 53% free area.
- Finish:** Powder paint coating - white.
- Air pattern:** Fixed horizontal 360° diffusion.
- Mounting:** Lay-in T-bar ceiling.



PSM



✓	Model #	Duct Size	E	Face Dim B x B	C
	PSM 2406	6	5 7/8"	23 3/4" x 23 3/4"	2 7/8"
	PSM 2408	8	7 7/8"	23 3/4" x 23 3/4"	2 7/8"
	PSM 2410	10	9 7/8"	23 3/4" x 23 3/4"	2 7/8"
	PSM 2412	12	11 7/8"	23 3/4" x 23 3/4"	2 7/8"
	PSM 2414	14	13 7/8"	23 3/4" x 23 3/4"	2 7/8"

Job: \_\_\_\_\_

Architect: \_\_\_\_\_

Engineer: \_\_\_\_\_

Contractor: \_\_\_\_\_