

PRODUCT DESCRIPTION

Series GFXF return grilles and registers have blades spaced on 3/4" centers. These units have a face hinged to a mounting frame

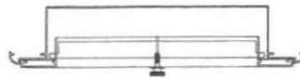
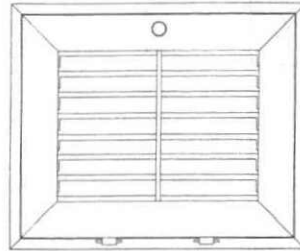


with space for a 1" filter pad. They are designed to function as intake grilles on unit air conditioners or on unit ventilators which are normally suspended in the ceiling soffit or located low in the side-wall.

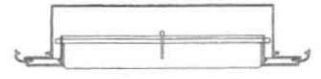
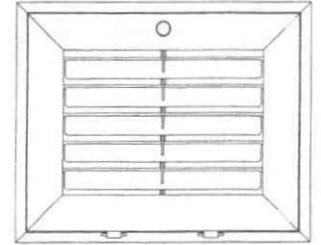
Grille face is available in several different styles. This unit is constructed entirely of etched and anodized aluminum. Support bars are installed 18" maximum centers. #6 x 1 1/2" mounting screws are furnished.

Series GFXFC has fixed horizontal blades spaced on 1" centers with 40° deflection. The curved blade design reduces visibility but still provides an effective free area capacity of approximately 61% which minimizes intake velocity, reduces inlet pressure and provides a quiet operation. The entire unit is constructed of etched and anodized extruded aluminum. #6 X 1 1/2" mounting screws are furnished.

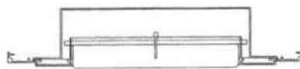
Series NGFXF return filter grilles have blades spaced on 3/4" centers. These units have bottom hidden hinges and face will remove from filter frame for easy cleaning. Filter grilles equipped with spring fasteners. This unit is constructed entirely of Extruded Aluminum. #6 X 1 1/2" mounting screws are furnished.



GFXF



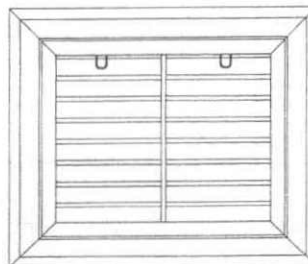
GFXFC



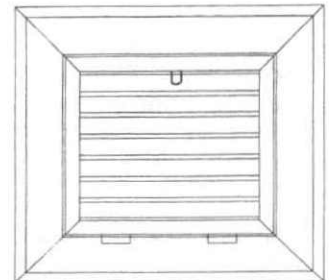
GFXFCB



GFXF5



NGFXF



NGFXFTB

RG