

# Back-Draft Dampers

**Description:** Back draft dampers allow air to pass in one direction and restrict flow in the opposite direction.



## Required information:

1. What is the orientation (mount) of the damper?

- ☐ Horizontal (used when air flow is vertical)  
☐ Vertical (used when air flow is horizontal)

Please note: Back draft dampers cannot be used for downdraft applications

2. What is the frame type of the damper?

- ☐ Channel frame: provide consistent outside dimensions around a louver's perimeter and can be installed flush with the face of a wall (inset from a face) or slid inside a sleeve.  
☐ Flanged: help hide inconsistent gaps between louvers and the opening caused by uneven sizes or out of square conditions. (must specify intake or exhaust)  
☐ Intake      ☐ Exhaust

3. What are the dimensions of the damper?

width" x height" \_\_\_\_\_ x \_\_\_\_\_

4. Counter-balance weights need?

- ☐ Yes      ☐ No  
☐ Counter-balance rods to aid/assist opening  
☐ Counter-balance rods to aid/assist closing

6. What finish is desired?

- ☐ Mill finish (standard if not specified)  
☐ Clear anodized  
☐ Anodized colors, consult factory for colors available  
☐ Baked enamel \*  
☐ "Kynar" \*

7. Round sleeve transitions are available.

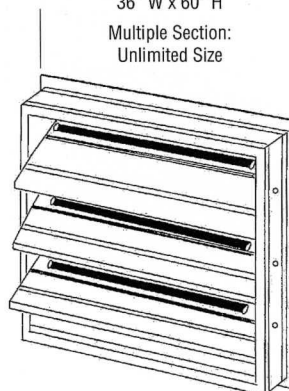
Please specify diameter \_\_\_\_\_

\* If these items are selected, please indicate color choice here: \_\_\_\_\_

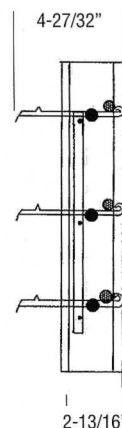
If no color has been specified, we will quote a standard color. At time of order, if color is selected, additional charges may apply.

Single Section Maximum Size:  
36" W x 60" H

Multiple Section:  
Unlimited Size



Minimum Size:  
6" W x 6" H



**Lloyd Industries, Inc.**

231 Commerce Dr. • Montgomeryville, PA 18936

Phone: 215-412-4445 • Fax 215-412-4409

**www.firedamper.com**

5858 Broadway Ave. • Jacksonville, FL 32254

Phone: 904-378-8440 • Fax 904-378-8441

Date: \_\_\_\_\_

### Wholesaler

Name: \_\_\_\_\_

Location: \_\_\_\_\_

Salesman: \_\_\_\_\_

Phone: \_\_\_\_\_

### Contractor

Company: \_\_\_\_\_

Name: \_\_\_\_\_

Job Name: \_\_\_\_\_

Signature: \_\_\_\_\_

### Comments:

\_\_\_\_\_  
 \_\_\_\_\_  
 \_\_\_\_\_  
 \_\_\_\_\_