

# SUBMITTAL SHEET



N° ALB60 / ALB67

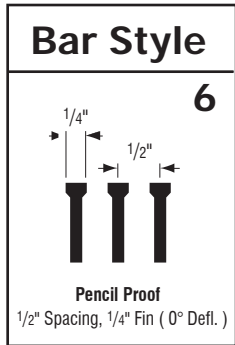
## ALB Architectural Linear Bar Grille

**Material:** Extruded aluminum  
Lengths over 72 inches supplied as multiple sections

**Opposed Fin Blade Damper (optional):**  
Galvanized steel construction  
Key-operated through grille face

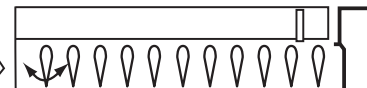
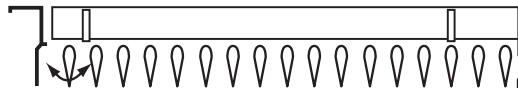
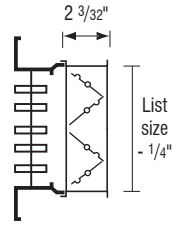
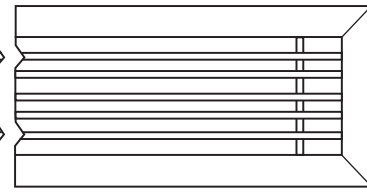


**ALB60 / ALB67**



**ALB60 = Grille Only**

**ALB67 = Grille + OBD**



**ALB60-L = Grille + Air Equalizing Grid**

**ALB67-L = Grille + OBD + Air Equalizing Grid**

**-V = Vertical bars (default Horizontal)**

Margin Style			
<p><b>-A</b></p> <p>← Listed + 13/32" →</p> <p>9/16" →   ←</p> <p>1 9/32"</p> <p>N/A with -3, -RM</p>	<p><b>-B</b></p> <p>← Listed + 31/32" →</p> <p>7/8" →   ←</p> <p>1 9/32"</p> <p>N/A with -3, -RM</p>	<p><b>-E</b></p> <p>← Listed + 1 11/32" →</p> <p>11/16" →   ←</p> <p>1 9/32"</p> <p>N/A with -RM</p>	<p><b>-F</b></p> <p>← Listed + 1 3/8" →</p> <p>1" →   ←</p> <p>2"</p> <p>Only with -RM, N/A with -2, -4</p>
<p><b>-G</b></p> <p>← Listed - 1/4" →</p> <p>3/16" →   ←</p> <p>2"</p> <p>Only with -1, -RM</p>	<p><b>-R</b></p> <p>← Listed + 1 3/8" →</p> <p>1 1/16" →   ←</p> <p>1 9/32"</p> <p>N/A with -RM</p>	<p><b>-T</b></p> <p>← Listed →</p> <p>1" →   ←</p> <p>1 9/32"</p> <p>← Listed - 1 11/32" →</p> <p>N/A with -2, -3, -4, -RM</p>	

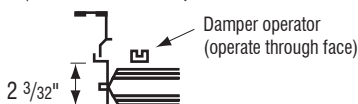


Fastening Method	
<p>No Fastening <b>-1</b></p> <p>N/A with -A, -B, -G</p>	<p>Spring clip <b>-2</b></p> <p>N/A with -F, -G</p>
<p>Screw <b>-3</b></p> <p>N/A with -A, -B, -G</p>	<p>Concealed <b>-4</b></p> <p>N/A with -F, -G</p>

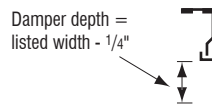
Finish					
<p><b>/W</b></p> <p>Powder Coated White</p>	<p><b>/M</b></p> <p>Mill Finish</p>	<p><b>/A</b></p> <p>Anodized</p>	<p><b>/B</b></p> <p>Brushed Aluminum</p> <p>N/A w/ -F, -G, -R</p>	<p><b>/L</b></p> <p>Brushed and Lacquered</p> <p>N/A w/ -F, -G, -R</p>	<p><b>/Custom</b></p> <p>Specify here</p>

- Reinforced Floor Application -RF**  
(Up to 6" wide)
- Removable Core Application -RM**  
Only w/ -F, -G

#7 DAMPER FURNISHED ON LISTED WIDTHS OF 4" AND OVER (for 1" increments only)



#9 DAMPER FURNISHED ON LISTED WIDTHS UNDER 4"



All dimensions in inches.  
Dimensions shown contain expansion tolerances based on temperature rise of 40°F above the ambient temperature at which the material is fabricated.

Job: \_\_\_\_\_

Architect: \_\_\_\_\_

Engineer: \_\_\_\_\_

Contractor: \_\_\_\_\_