

SUBMITTAL SHEET



N° ALB30 / ALB37

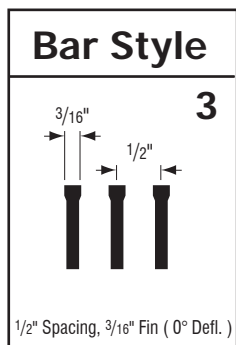
ALB Architectural Linear Bar Grille

Material: Extruded aluminum
Lengths over 72 inches supplied as multiple sections

Opposed Blade Damper (optional):
Galvanized steel construction
Key-operated through grille face

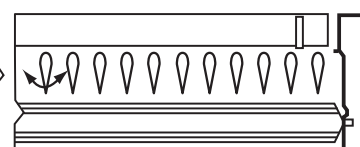
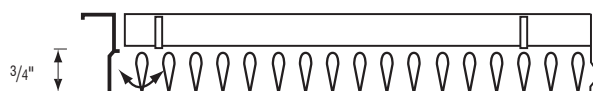
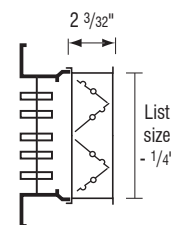
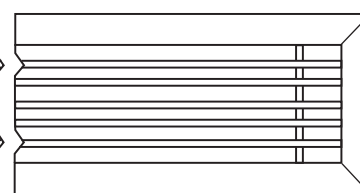
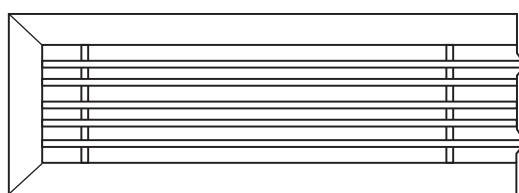
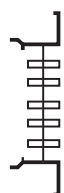


ALB30 / ALB37



ALB30 = Grille Only

ALB37 = Grille + OBD



ALB30-L = Grille + Air Equalizing Grid

ALB37-L = Grille + OBD + Air Equalizing Grid

-V = Vertical bars (default Horizontal)

Margin Style			
<p>-A</p> <p>Listed + 1 13/32"</p> <p>9/16"</p> <p>1 9/32"</p> <p>N/A with -3, -RM</p>	<p>-B</p> <p>Listed + 31/32"</p> <p>7/8"</p> <p>1 9/32"</p> <p>N/A with -3, -RM</p>	<p>-E</p> <p>Listed + 1 11/32"</p> <p>1 1/16"</p> <p>1 9/32"</p> <p>N/A with -RM</p>	<p>-F</p> <p>Listed + 1 3/8"</p> <p>1"</p> <p>2"</p> <p>Only with -RM, N/A with -2, -4</p>
<p>-G</p> <p>Listed - 1/4"</p> <p>3/16"</p> <p>2"</p> <p>Only with -1, -RM</p>	<p>-R</p> <p>Listed + 1 3/8"</p> <p>1 1/16"</p> <p>1 9/32"</p> <p>N/A with -RM</p>	<p>-T</p> <p>Listed</p> <p>1"</p> <p>1 9/32"</p> <p>Listed - 1 11/32"</p> <p>N/A with -2, -3, -4, -RM</p>	



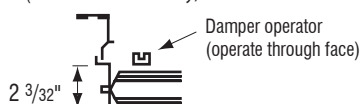
Fastening Method	
<p>-1</p> <p>No Fastening</p> <p>N/A with -F, -G</p>	<p>-2</p> <p>Spring clip</p> <p>N/A with -F, -G</p>
<p>-3</p> <p>Screw</p> <p>N/A with -A, -B, -G</p>	<p>-4</p> <p>Concealed</p> <p>N/A with -F, -G</p>

Finish					
/W	/M	/A	/B	/L	/Custom
Powder Coated White	Mill Finish	Anodized	Brushed Aluminum N/A w/ -F, -G, -R	Brushed and Lacquered N/A w/ -F, -G, -R	Specify here

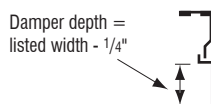
Reinforced Floor Application -RF (Up to 6" wide)

Removable Core Application -RM Only w/ -F, -G

#7 DAMPER FURNISHED ON LISTED WIDTHS OF 4" AND OVER (for 1" increments only)



#9 DAMPER FURNISHED ON LISTED WIDTHS UNDER 4"



Job: _____

Architect: _____

Engineer: _____

Contractor: _____

All dimensions in inches.
Dimensions shown contain expansion tolerances based on temperature rise of 40°F above the ambient temperature at which the material is fabricated.