

9400 LINEAR SLOT DIFFUSERS

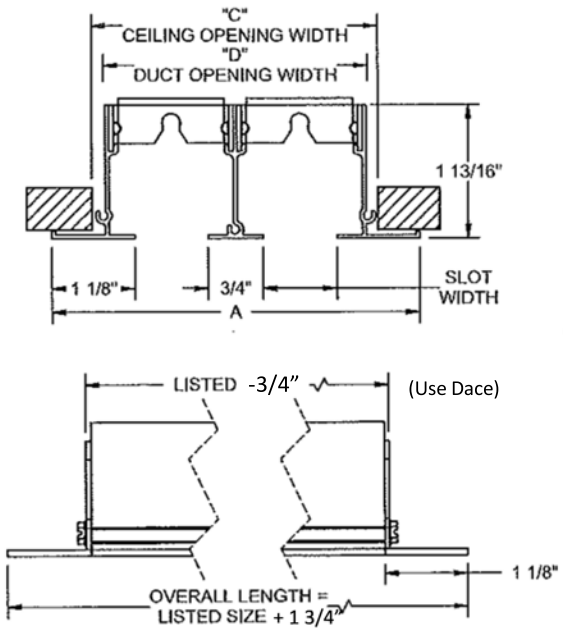
1/2", 3/4", & 1" SLOT WIDTHS WITH UP TO 10 SLOTS, IN SECTION LENGTHS OF 12" MINIMUM TO 72" MAXIMUM. FIELD BUTT FOR CONTINUOUS RUN. PRODUCT DESCRIPTION LINE 3

EXTRUDED ALUMINUM; 6063-T5

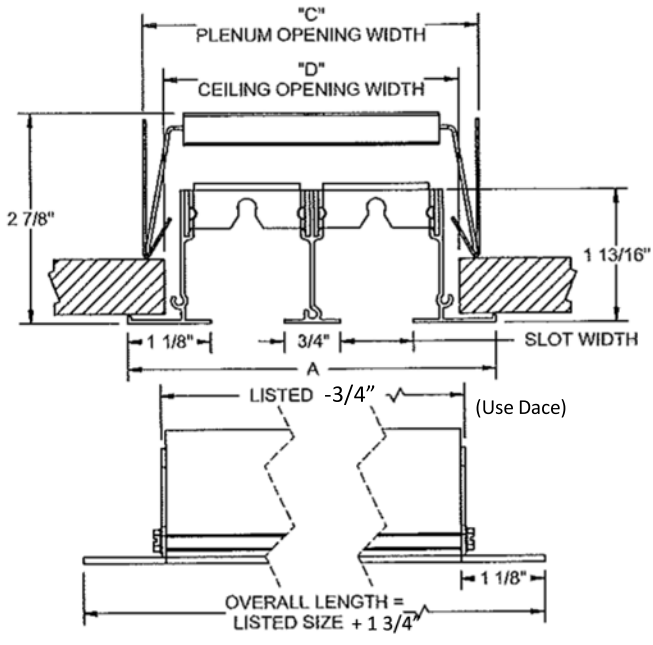
FINISH - W (WHITE PAINTED)

LENGTHS GREATER THAN 72" ARE FURNISHED IN MULTIPLE SECTIONS, THE NUMBER WILL BE DETERMINED BY THE FACTORY.

MAXIMUM PATTERN CONTROLLER LENGTH IS 24" PATTERN CONTROLLERS ARE FURNISHED IN MULTIPLE SECTIONS FOR A DIFFUSER LONGER THAN 24".



MODEL - W9475 - 640



MODEL - W9475 - 640 WITH HANGER BRACKET

1 1/8" MARGIN - SURFACE MOUNT - 640

(Use Dace)

DIMENSION	TYPE	NUMBER OF SLOTS								"D"	"C"
		1	2	3	4	5	6	7	8		
A	1/2"	2 3/4	4	5 1/4	6 1/2	7 3/4	9	10 1/4	11 1/2	A - 1"	A - .875"
	3/4"	3	4 1/2	6	7 1/2	9	10 1/2	12	13 1/2		
	1"	3 1/4	5	6 3/4	8 1/2	10 1/4	12	13 3/4	15 1/2		

1 1/8" MARGIN - SURFACE MOUNT - 640 - HANGER BRACKET

(Use Dace)

DIMENSION	TYPE	NUMBER OF SLOTS								"D"	"C"
		1	2	3	4	5	6	7	8		
A	1/2"	2 3/4	4	5 1/4	6 1/2	7 3/4	9	10 1/4	11 1/2	A - .75"	A - .50"
	3/4"	3	4 1/2	6	7 1/2	9	10 1/2	12	13 1/2		
	1"	3 1/4	5	6 3/4	8 1/2	10 1/4	12	13 3/4	15 1/2		

SIZE SCHEDULE

DWG NO. 02HV096AW	JOB NAME: _____	ENGINEER: _____
DATE: 07/29/16	LOCATION: _____	CONTRACTOR: _____
	ARCHITECT: _____	FINISH: _____

9400 LINEAR SLOT DIFFUSERS

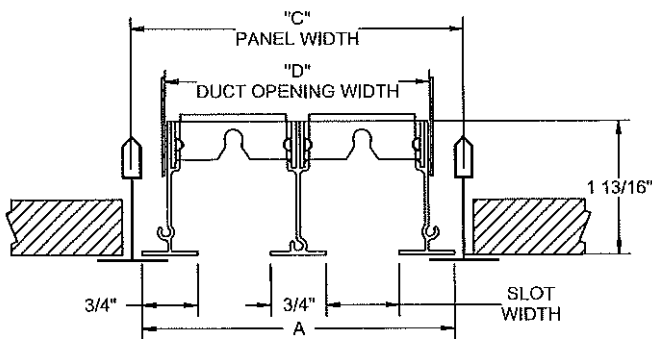
1/2", 3/4", & 1" SLOT WIDTHS WITH UP TO 10 SLOTS, IN SECTION LENGTHS OF 12" MINIMUM TO 72" MAXIMUM. FIELD BUTT FOR CONTINUOUS RUN. PRODUCT DESCRIPTION LINE 3

EXTRUDED ALUMINUM; 6063-T5

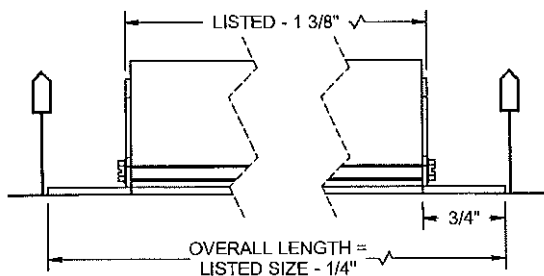
FINISH - W (WHITE PAINTED)

LENGTHS GREATER THAN 72" ARE FURNISHED IN MULTIPLE SECTIONS, THE NUMBER WILL BE DETERMINED BY THE FACTORY.

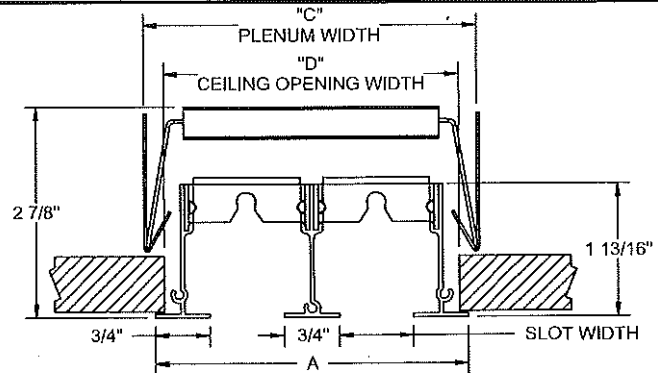
MAXIMUM PATTERN CONTROLLER LENGTH IS 24" PATTERN CONTROLLERS ARE FURNISHED IN MULTIPLE SECTIONS FOR A DIFFUSER LONGER THAN 24".



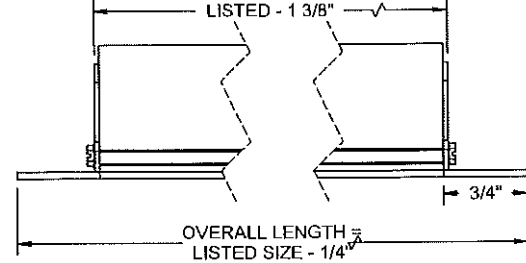
call to confirm



MODEL - W9475 - 672



call to confirm



MODEL - W9475 - 672 WITH HANGER BRACKET

3/4" MARGIN - T-BAR - 672

DIMENSION	TYPE	NUMBER OF SLOTS								"D"	"C"
		1	2	3	4	5	6	7	8		
A	1/2"	2	3 1/4	4 1/2	5 3/4	7	8 1/4	9 1/2	10 3/4	A - 9/16	A + 1/4
	3/4"	2 1/4	3 3/4	5 1/4	6 3/4	8 1/4	9 3/4	11 1/4	12 3/4		
	1"	2 1/2	4 1/4	6	7 3/4	9 1/2	11 1/4	13	14 3/4		

3/4" MARGIN - SURFACE MOUNT - 672 - HANGER BRACKET

DIMENSION	TYPE	NUMBER OF SLOTS								"D"	"C"
		1	2	3	4	5	6	7	8		
A	1/2"	2	3 1/4	4 1/2	5 3/4	7	8 1/4	9 1/2	10 3/4	A - 1	A - 1/2
	3/4"	2 1/4	3 3/4	5 1/4	6 3/4	8 1/4	9 3/4	11 1/4	12 3/4		
	1"	2 1/2	4 1/4	6	7 3/4	9 1/2	11 1/4	13	14 3/4		

SIZE SCHEDULE

DWG NO. 02HV097AW	JOB NAME: _____	ENGINEER: _____
DATE: 08/01/16	LOCATION: _____	CONTRACTOR: _____
	ARCHITECT: _____	FINISH: _____

9400 LINEAR SLOT DIFFUSERS

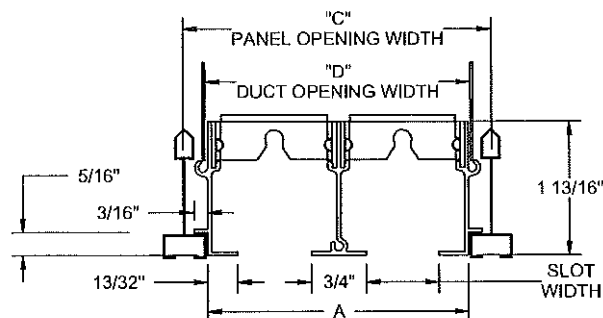
1/2", 3/4", & 1" SLOT WIDTHS WITH UP TO 10 SLOTS, IN SECTION LENGTHS OF 12" MINIMUM TO 72" MAXIMUM. FIELD BUTT FOR CONTINUOUS RUN. PRODUCT DESCRIPTION LINE 3

EXTRUDED ALUMINUM; 6063-T5

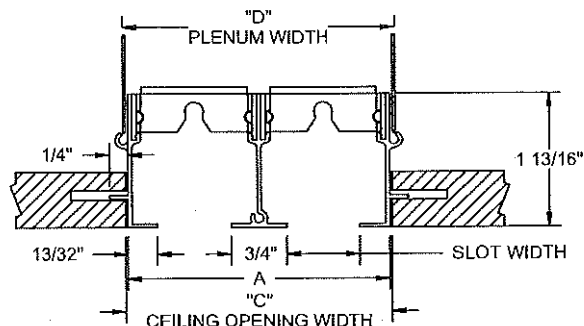
FINISH - W (WHITE PAINTED)

LENGTHS GREATER THAN 72" ARE FURNISHED IN MULTIPLE SECTIONS, THE NUMBER WILL BE DETERMINED BY THE FACTORY.

MAXIMUM PATTERN CONTROLLER LENGTH IS 24" PATTERN CONTROLLERS ARE FURNISHED IN MULTIPLE SECTIONS FOR A DIFFUSER LONGER THAN 24".



MODEL - W9475 - 670



MODEL - W9475 - 670 WITH HANGER BRACKET

7/16" MARGIN - NARROW-TEE

DIMENSION	TYPE	NUMBER OF SLOTS								"D"	"C"
		1	2	3	4	5	6	7	8		
A	1/2"	1 5/16	2 9/16	3 13/16	5 1/16	6 5/16	7 9/16	8 13/16	10 1/16	A + 1/8	A + 7/8
	3/4"	1 9/16	3 1/16	4 9/16	6 1/16	7 9/16	9 1/16	10 9/16	12 1/16		
	1"	1 13/16	3 9/16	5 5/16	7 1/16	8 13/16	10 9/16	12 5/16	14 1/16		

7/16" MARGIN - CONCEALED SPLINE

DIMENSION	TYPE	NUMBER OF SLOTS								"D"	"C"
		1	2	3	4	5	6	7	8		
A	1/2"	1 5/16	2 9/16	3 13/16	5 1/16	6 5/16	7 9/16	8 13/16	10 1/16	A + 1/16	A + 1/16
	3/4"	1 9/16	3 1/16	4 9/16	6 1/16	7 9/16	9 1/16	10 9/16	12 1/16		
	1"	1 13/16	3 9/16	5 5/16	7 1/16	8 13/16	10 9/16	12 5/16	14 1/16		

SIZE SCHEDULE

DWG NO. 02HV098AW	JOB NAME: _____	ENGINEER: _____
DATE: 08/01/16	LOCATION: _____	CONTRACTOR: _____
	ARCHITECT: _____	FINISH: _____

9400 LINEAR SLOT DIFFUSERS

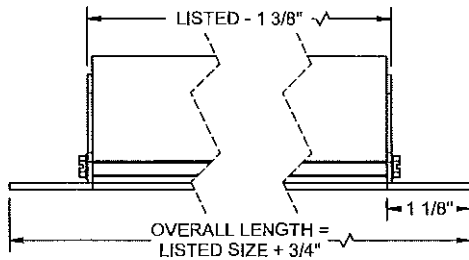
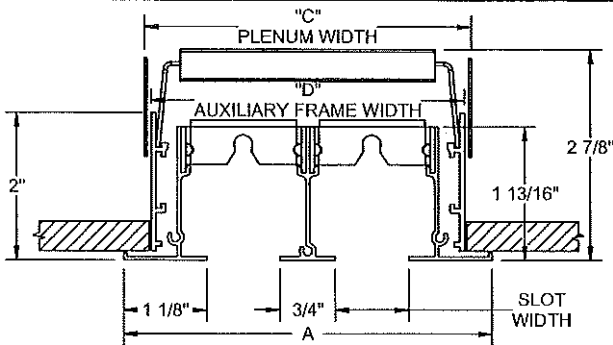
1/2", 3/4", & 1" SLOT WIDTHS WITH UP TO 10 SLOTS, IN SECTION LENGTHS OF 12" MINIMUM TO 72" MAXIMUM. FIELD BUTT FOR CONTINUOUS RUN. PRODUCT DESCRIPTION LINE 3

EXTRUDED ALUMINUM; 6063-T5

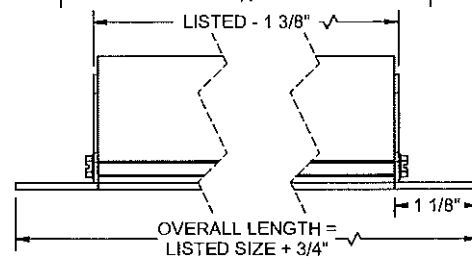
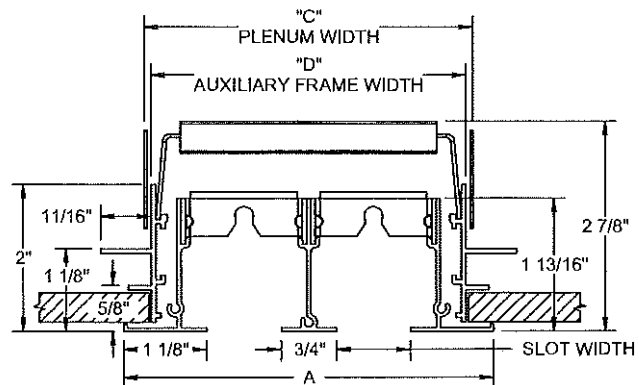
FINISH - W (WHITE PAINTED)

LENGTHS GREATER THAN 72" ARE FURNISHED IN MULTIPLE SECTIONS, THE NUMBER WILL BE DETERMINED BY THE FACTORY.

MAXIMUM PATTERN CONTROLLER LENGTH IS 24" PATTERN CONTROLLERS ARE FURNISHED IN MULTIPLE SECTIONS FOR A DIFFUSER LONGER THAN 24".



MODEL - W9475 - 672 w/805 AUXILIARY FRAME



MODEL - W9475 - 640 w/806 AUXILIARY FRAME

1 1/8" MARGIN - AUXILIARY FRAME 805

DIMENSION	TYPE	NUMBER OF SLOTS								"D"	"C"
		1	2	3	4	5	6	7	8		
A	1/2"	2 3/4	4	5 1/4	6 1/2	7 3/4	9	10 1/4	11 1/2	A - 3/4	A - 9/16
	3/4"	3	4 1/2	6	7 1/2	9	10 1/2	12	13 1/2		
	1"	3 1/4	5	6 3/4	8 1/2	10 1/4	12	13 3/4	15 1/2		

1 1/8" MARGIN - AUXILIARY FRAME 806

DIMENSION	TYPE	NUMBER OF SLOTS								"D"	"C"
		1	2	3	4	5	6	7	8		
A	1/2"	2 3/4	4	5 1/4	6 1/2	7 3/4	9	10 1/4	11 1/2	A - 3/4	A - 9/16
	3/4"	3	4 1/2	6	7 1/2	9	10 1/2	12	13 1/2		
	1"	3 1/4	5	6 3/4	8 1/2	10 1/4	12	13 3/4	15 1/2		

SIZE SCHEDULE

DWG NO. 02HV099AW	JOB NAME: _____	ENGINEER: _____
DATE: 08/02/16	LOCATION: _____	CONTRACTOR: _____
	ARCHITECT: _____	FINISH: _____

9400 LINEAR SLOT DIFFUSERS

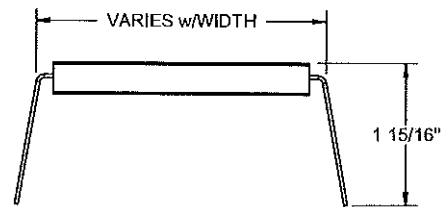
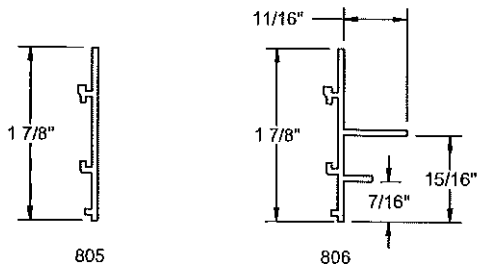
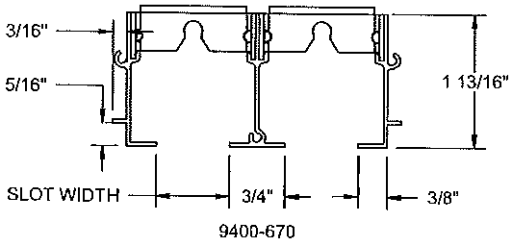
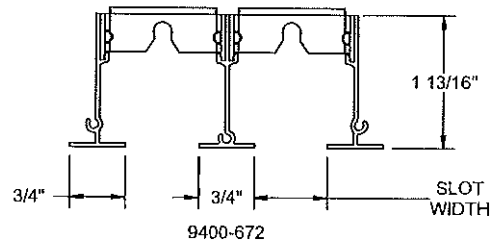
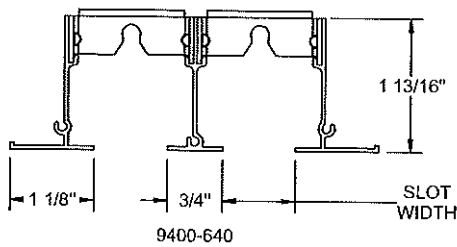
1/2", 3/4", & 1" SLOT WIDTHS WITH UP TO 10 SLOTS, IN SECTION LENGTHS OF 12" MINIMUM TO 72" MAXIMUM. FIELD BUTT FOR CONTINUOUS RUN. PRODUCT DESCRIPTION LINE 3

EXTRUDED ALUMINUM; 6063-T5

FINISH - W (WHITE PAINTED)

LENGTHS GREATER THAN 72" ARE FURNISHED IN MULTIPLE SECTIONS, THE NUMBER WILL BE DETERMINED BY THE FACTORY.

MAXIMUM PATTERN CONTROLLER LENGTH IS 24" PATTERN CONTROLLERS ARE FURNISHED IN MULTIPLE SECTIONS FOR A DIFFUSER LONGER THAN 24".



HANGER BRACKET
AVAILABLE ALL MODELS

STANDARD AND OPTIONAL FRAMES

DWG NO. 02HV102BW	JOB NAME: _____	ENGINEER: _____
DATE: 08/02/16	LOCATION: _____	CONTRACTOR: _____
	ARCHITECT: _____	FINISH: _____