



Web Reprs 1-800-810-3280

## 6375RDABL DRAINABLE ADJUSTABLE LOUVER EXTRUDED ALUMINUM

### STANDARD CONSTRUCTION

#### FRAME

6" (152) deep, 6063T5 extruded aluminum with .081" (2.1) nominal wall thickness. Downspouts and caulking surfaces provided.

#### BLADES

6063T5 extruded aluminum. .081" (2.1) nominal wall thickness. Drainable blades are adjustable to 37<sup>1</sup>/<sub>2</sub>° angle. Blade spacing is approximately 6" (152) center to center.

#### SCREEN

<sup>3</sup>/<sub>4</sub>" x .051" (19 x 1.3) expanded, flattened aluminum bird screen in removable frame. Screen adds approximately <sup>1</sup>/<sub>2</sub>" (13) to louver depth.

#### SEALS

Flexible, compressible aluminum jamb seals.

#### BEARINGS

Stainless steel sleeve pressed into frame.

#### AXLES

<sup>1</sup>/<sub>2</sub>" (13) plated steel hex.

#### FINISH

Mill.

#### LINKAGE

Concealed in frame.

#### ACTUATOR

Locking louver quadrant.

#### MINIMUM SIZE

12"w x 12"h (305 x 305).

#### APPROXIMATE SHIPPING WEIGHT

3.5 lbs./ft.<sup>2</sup> (17.1 kg per m<sup>2</sup>).

#### MAXIMUM FACTORY ASSEMBLY SIZE

Shall be 60"w x 96"h (1524 x 2438) without seals. Louvers with standard jamb seals and/or optional blade seals shall be 48"w x 96"h (1219 x 2438). Standard construction includes jamb seals. Louvers larger than the maximum factory assembly size will require field assembly of smaller sections.

### FEATURES

The 6375RDABL offers:

- Published performance ratings based on testing in accordance with AMCA Publication 511.
  - Low torque operation and architecturally pleasing appearance with low leakage performance.
  - Drain gutter in the head frame and each blade; downspouts in jambs and mullions to drain water from louver for minimum water cascade from blade to blade.
  - Concealed blade linkage is protected from weather exposure and reduces required installation depth.
  - Jamb seals provide tight blade-to-frame closure.
- \* 55% free area.

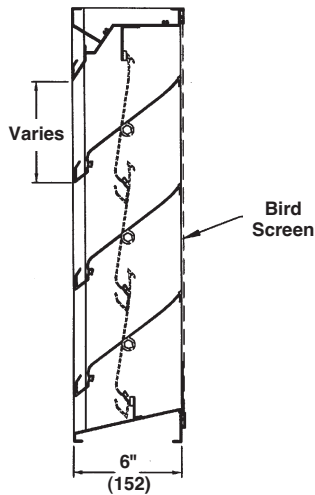
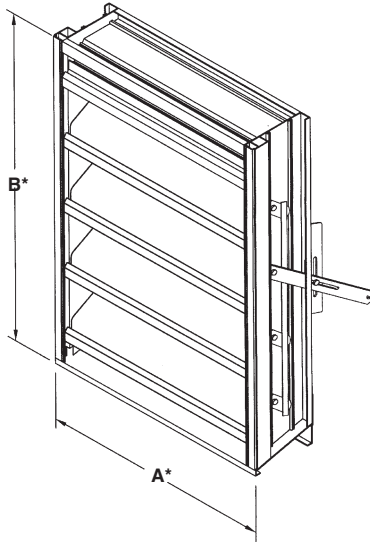
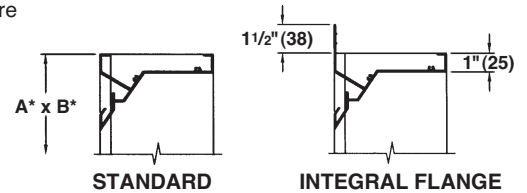
### VARIATIONS

Variations to the basic design of this louver are available at additional cost. They include:

- Extended sill.
- Front or rear security bars.
- Filter racks.
- Blade edge seals.
- A variety of bird and insect screens.
- Selection of finishes: prime coat, baked enamel (modified fluoropolymer), epoxy, Acrodize, Kynar, clear and color anodize. (Some variation in anodize color consistency is possible.)
- Manual, electric or pneumatic actuators.

Consult Reliable for other special requirements.

### FRAME CONSTRUCTION

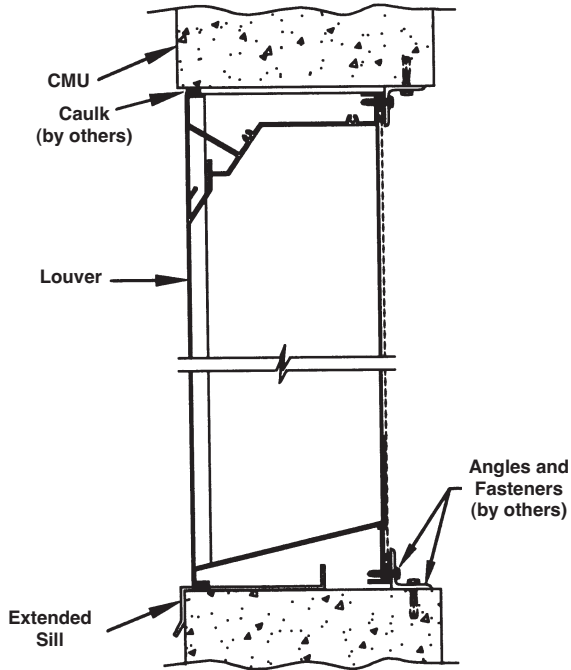


Dimensions in inches, parenthesis ( ) indicate millimeters.

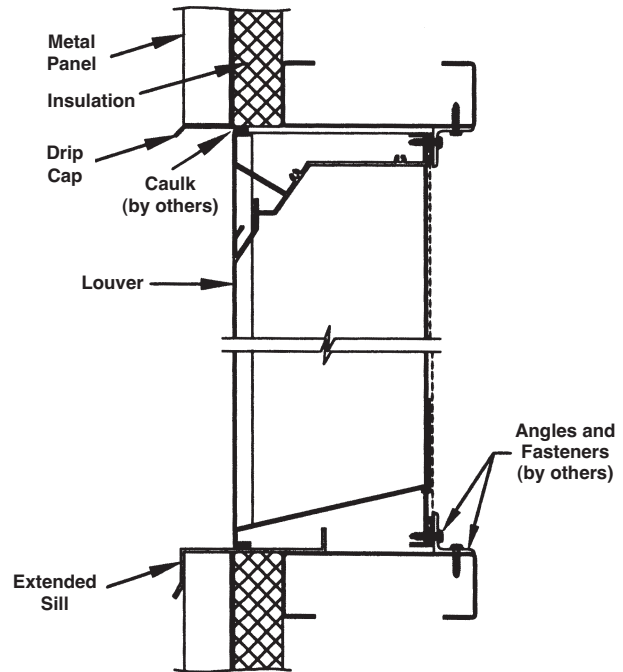
\*Units furnished <sup>1</sup>/<sub>4</sub>" (6) smaller than given opening dimensions.

TAG	QTY.	SIZE		FRAME	VARIATIONS
		A*-WIDE	B*-HIGH		
PROJECT ARCH./ENGR. REPRESENTATIVE					LOCATION CONTRACTOR DATE

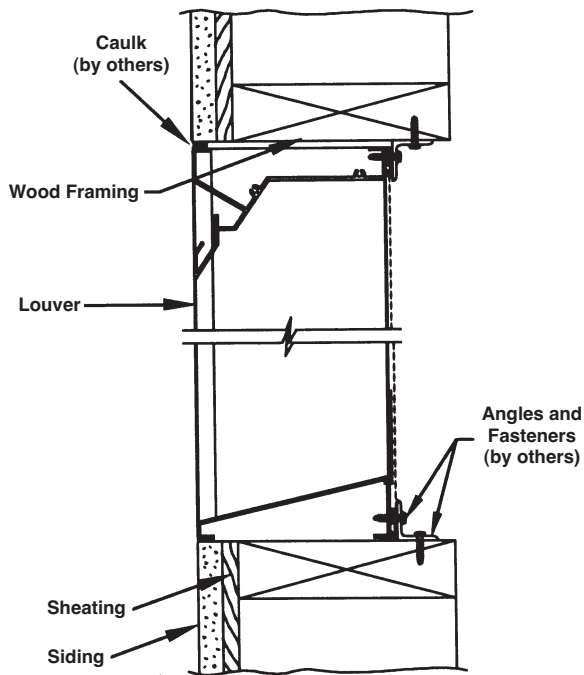
**Masonry Wall**



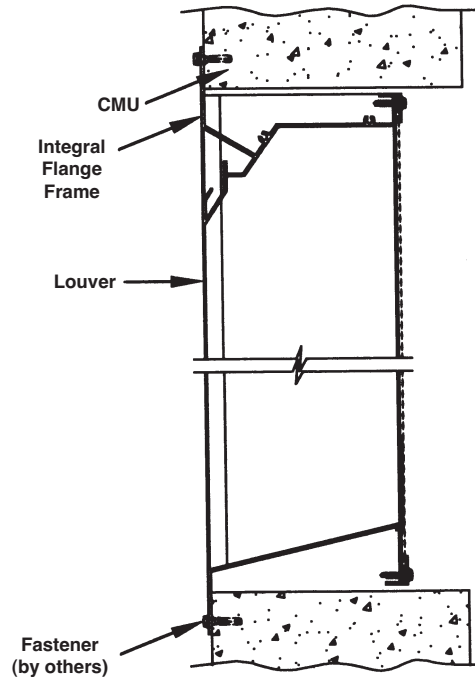
**Metal Panel Wall**



**Wood Installation**

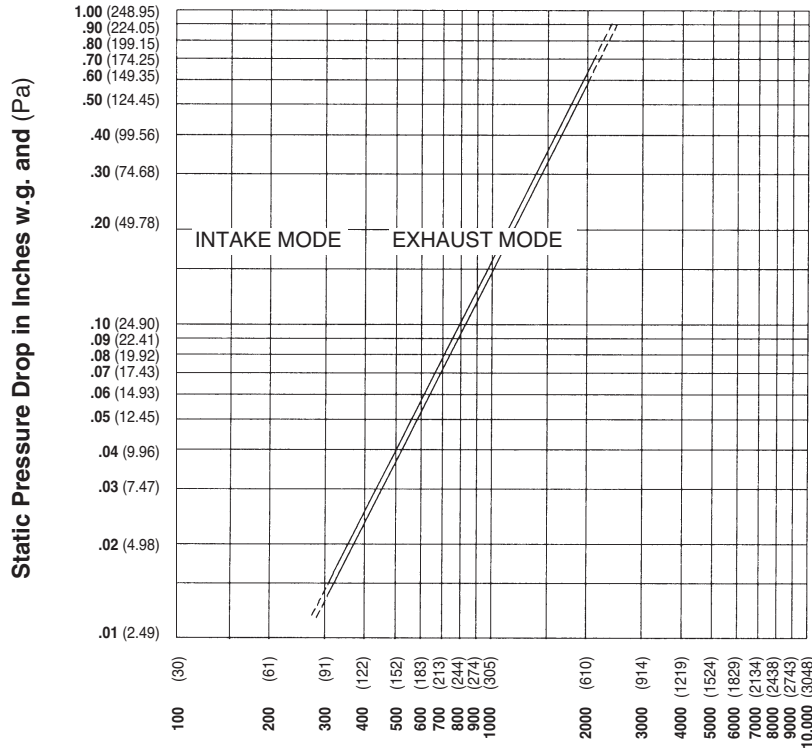


**Flange Mount**



\*Accessories at additional cost.

## PRESSURE DROP



Ratings do not include the effect of a bird screen.

Louver tested for water penetration and pressure drop with jamb seals.

Air Velocity in feet and (meters) per minute through Free Area

## PERFORMANCE DATA

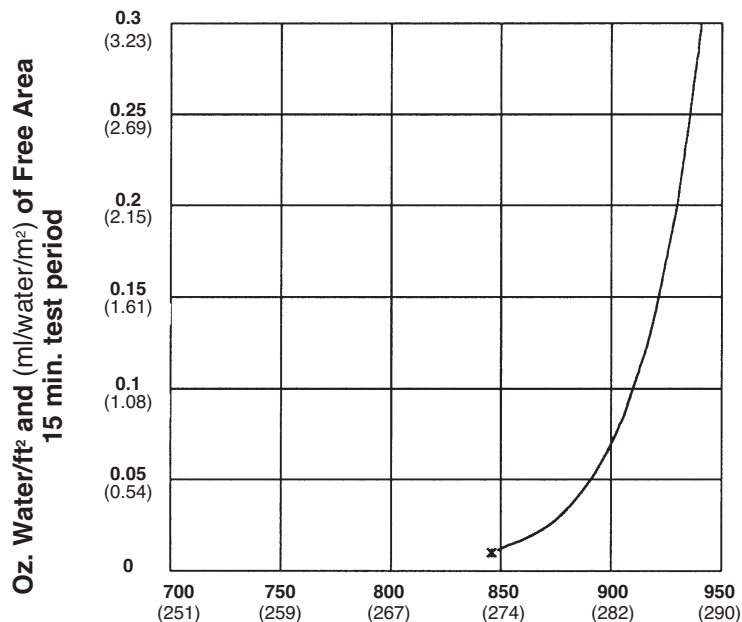
AMCA Standard 500 provides a reasonable basis for testing and rating louvers. Testing to AMCA 500 is performed under a certain set of laboratory conditions. This does not guarantee that other conditions will not occur in the actual environment where louvers must operate.

The louver system should be designed with a reasonable safety factor for louver performance. To ensure protection from water carry-over, design with a performance level somewhat below maximum desired pressure drop and .01 oz./sq. ft. of water penetration.

## WATER PENETRATION GRAPH

Test size 48" wide x 48" high (1219 x 1219)

Beginning point of water penetration at .01 oz./sq. ft. is 846 fpm (258 m/min).



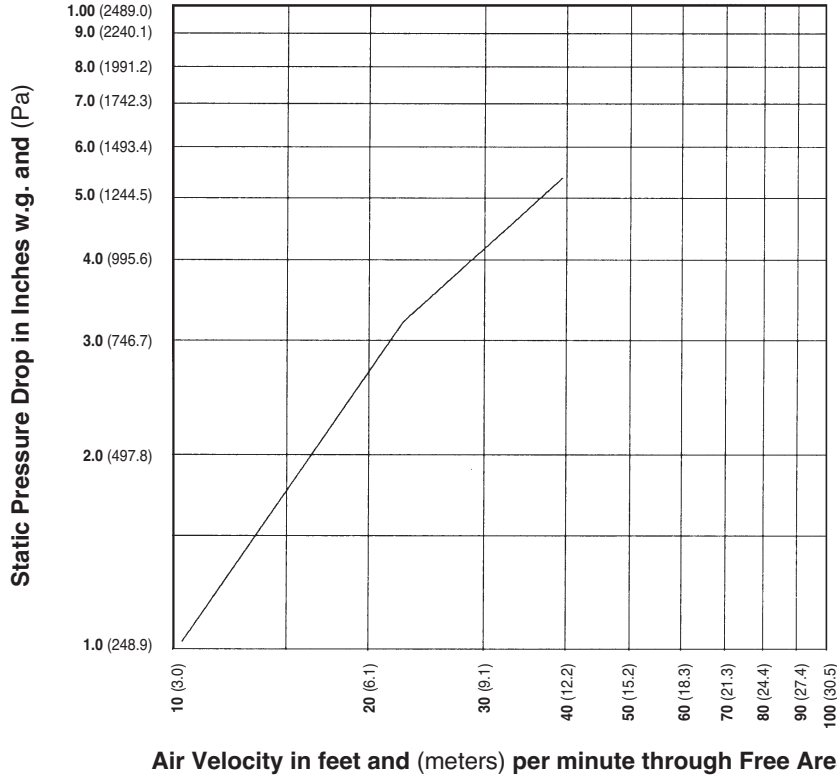
Free Area Velocity in feet and (meters) per minute  
Standard air .075 lb/ft³

Ratings do not include the effect of a bird screen.



Reliable Products certifies that the 6375RDABL Louvers shown herein are licensed to bear the AMCA Seal. The ratings shown are based on tests and procedures performed in accordance with AMCA Publication 511 and comply with the requirements of the AMCA Certified Ratings Program. The AMCA Certified Ratings Seal applies to air performance ratings and water penetration ratings only.

**AIR LEAKAGE WITH BLADES CLOSED**



Leakage at 1" w.g. (248.9) static pressure drop is 10.8 CFM per ft.<sup>2</sup> and (m<sup>2</sup>).

Louver tested for air leakage with jamb seals and optional blade seals.

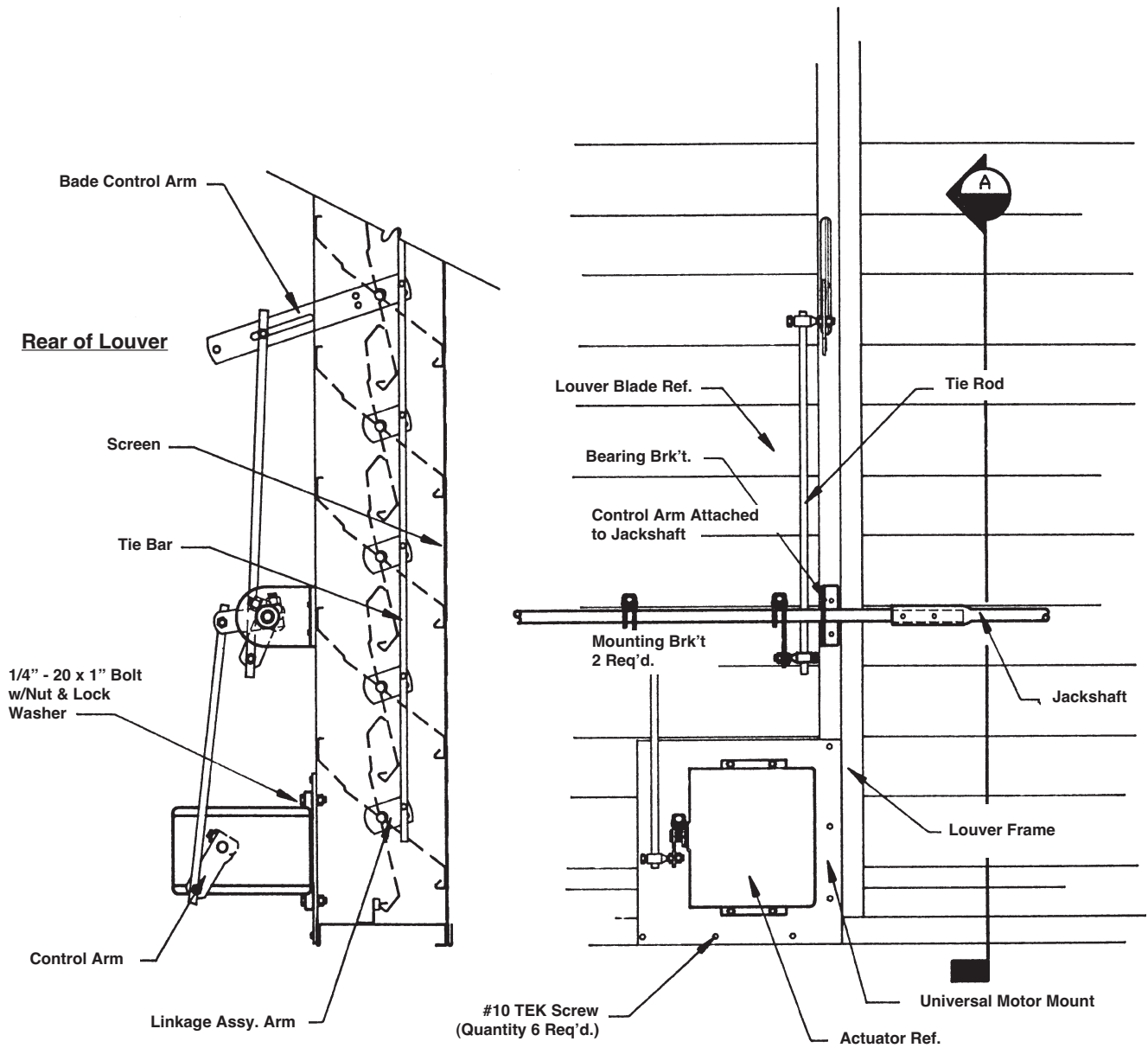
**FREE AREA GUIDE**

Free Area Guide shows free area in ft<sup>2</sup> and m<sup>2</sup> for various sizes of 6375RDABL.  
Width – Inches and Meters

Height – Inches and Meters	Width – Inches and Meters									
	12 0.30	18 0.46	24 0.61	30 0.76	36 0.91	42 1.07	48 1.22	54 1.37	60 1.52	
12 0.30	0.31 0.03	0.50 0.05	0.68 0.06	0.87 0.08	1.06 0.10	1.24 0.12	1.43 0.13	1.55 0.14	1.74 0.16	
18 0.46	0.57 0.05	0.92 0.09	1.26 0.12	1.61 0.15	1.95 0.18	2.30 0.21	2.64 0.25	2.87 0.27	3.22 0.30	
24 0.61	0.84 0.08	1.34 0.12	1.84 0.17	2.35 0.22	2.85 0.26	3.35 0.31	3.86 0.36	4.19 0.39	4.69 0.44	
30 0.76	1.10 0.10	1.76 0.16	2.43 0.23	3.09 0.29	3.75 0.35	4.41 0.41	5.07 0.47	5.51 0.51	6.17 0.57	
36 0.91	1.37 0.13	2.19 0.20	3.01 0.28	3.83 0.36	4.65 0.43	5.47 0.51	6.29 0.58	6.83 0.63	7.65 0.71	
42 1.07	1.63 0.15	2.61 0.24	3.59 0.33	4.57 0.42	5.54 0.51	6.52 0.61	7.50 0.70	8.15 0.76	9.13 0.85	
48 1.22	1.89 0.18	3.03 0.28	4.17 0.39	5.30 0.49	6.44 0.60	7.58 0.70	8.71 0.81	9.47 0.88	10.61 0.99	
54 1.37	2.16 0.20	3.45 0.32	4.75 0.44	6.04 0.56	7.34 0.68	8.63 0.80	9.93 0.92	10.79 1.00	12.09 1.12	
60 1.52	2.42 0.22	3.88 0.36	5.33 0.50	6.78 0.63	8.24 0.77	9.69 0.90	11.14 1.04	12.11 1.13	13.57 1.26	
66 1.68	2.69 0.25	4.30 0.40	5.91 0.55	7.52 0.70	9.13 0.85	10.75 1.00	12.36 1.15	13.43 1.25	15.04 1.40	
72 1.83	2.95 0.27	4.72 0.44	6.49 0.60	8.26 0.77	10.03 0.93	11.80 1.10	13.57 1.26	14.75 1.37	16.52 1.54	
78 1.98	3.21 0.30	5.14 0.48	7.07 0.66	9.00 0.84	10.93 1.02	12.86 1.20	14.79 1.37	16.07 1.49	18.00 1.67	
84 2.13	3.48 0.32	5.57 0.52	7.65 0.71	9.74 0.91	11.83 1.10	13.91 1.29	16.00 1.49	17.39 1.62	19.48 1.81	
90 2.29	3.74 0.35	5.99 0.56	8.23 0.76	10.48 0.97	12.73 1.18	14.97 1.39	17.22 1.60	18.71 1.74	20.96 1.95	
96 2.44	4.01 0.37	6.41 0.60	8.81 0.82	11.22 1.04	13.62 1.27	16.03 1.49	18.43 1.71	20.03 1.86	22.44 2.09	

## MOVABLE LOUVER DETAILS

### ELECTRIC OPERATOR (MA418 Actuator shown)

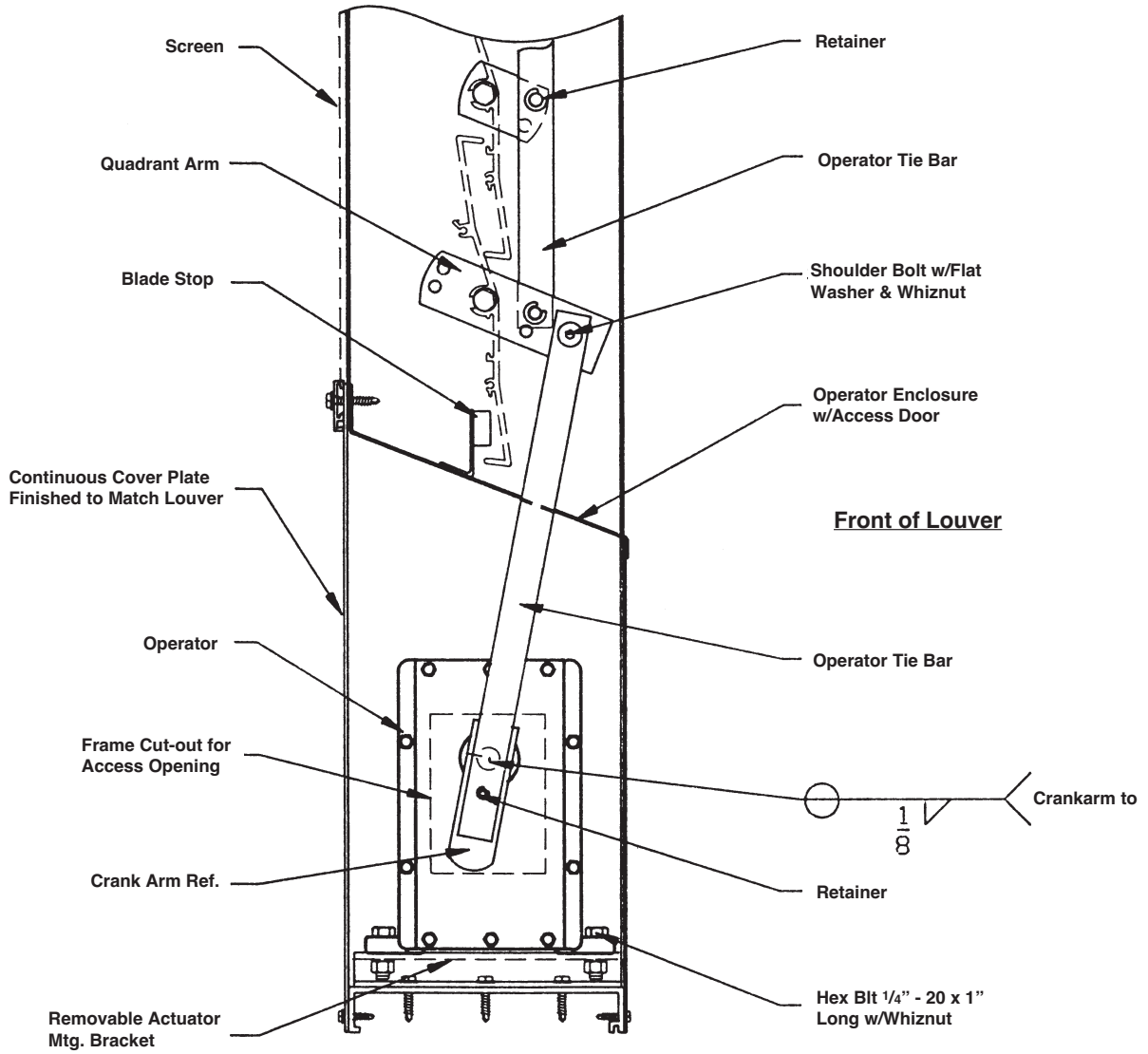


**A** SECTION THRU  
N.T.S. SECTION

PARTIAL REAR ELEVATION  
N.T.S. ELEVATION

DWG. NO.  
60-020685-00A

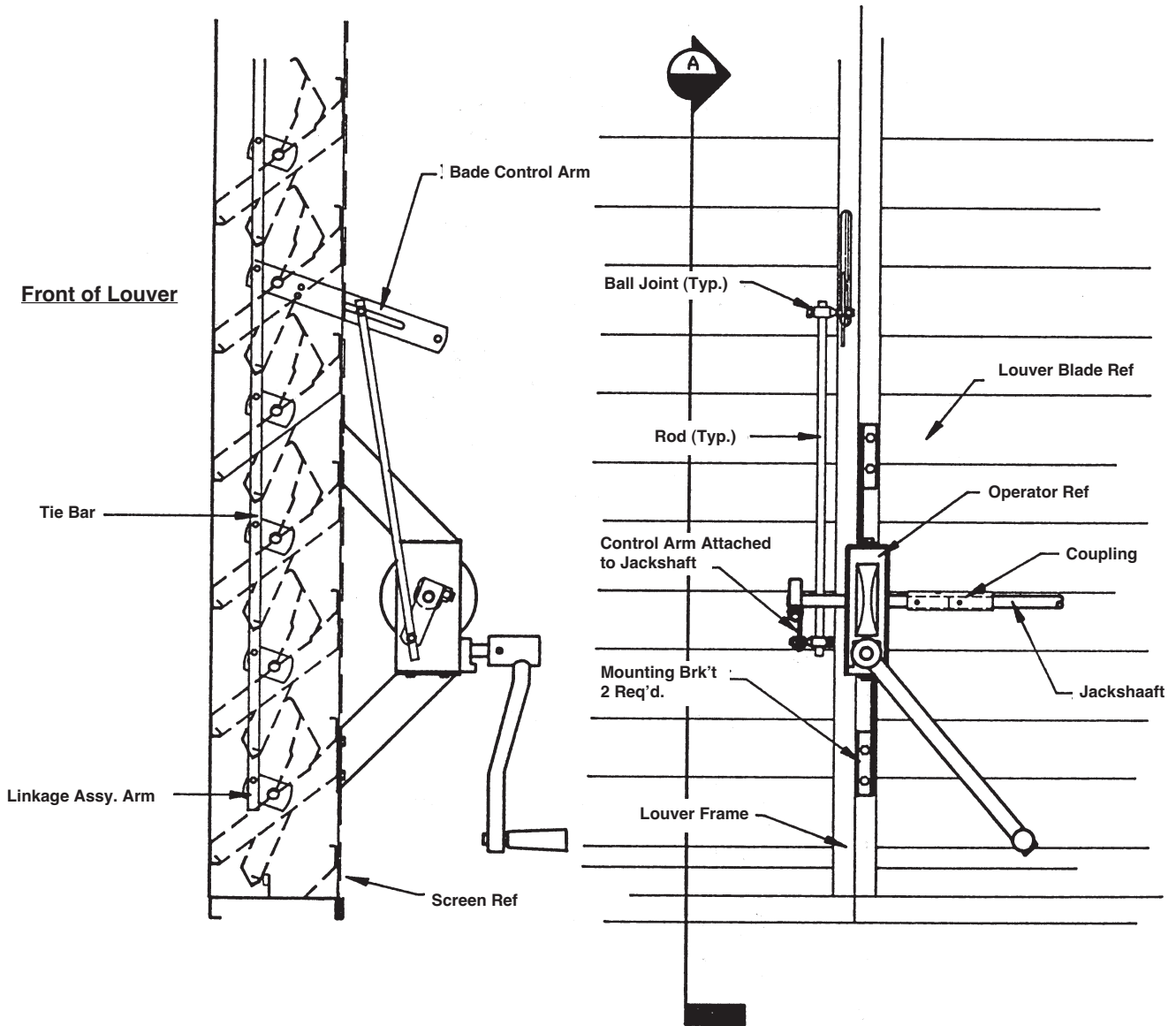
**CONCEALED MOTOR**  
 (MA418 Actuator shown)



DWG. NO.  
 60-020686-00A

## MOVABLE LOUVER DETAILS

### WORMGEAR OPERATOR



SECTION THRU  
N.T.S.

SECTION

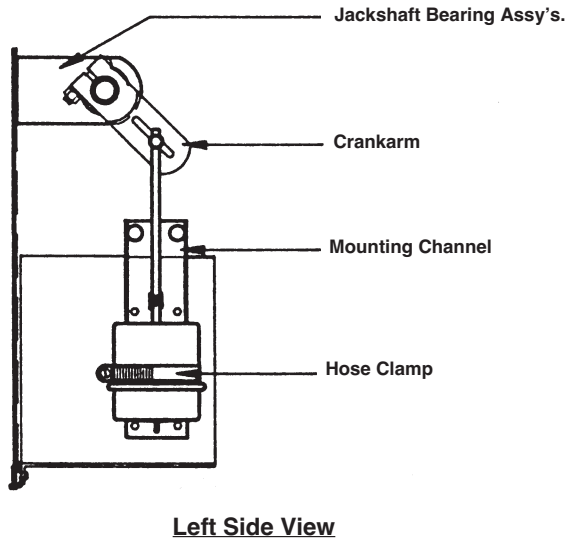
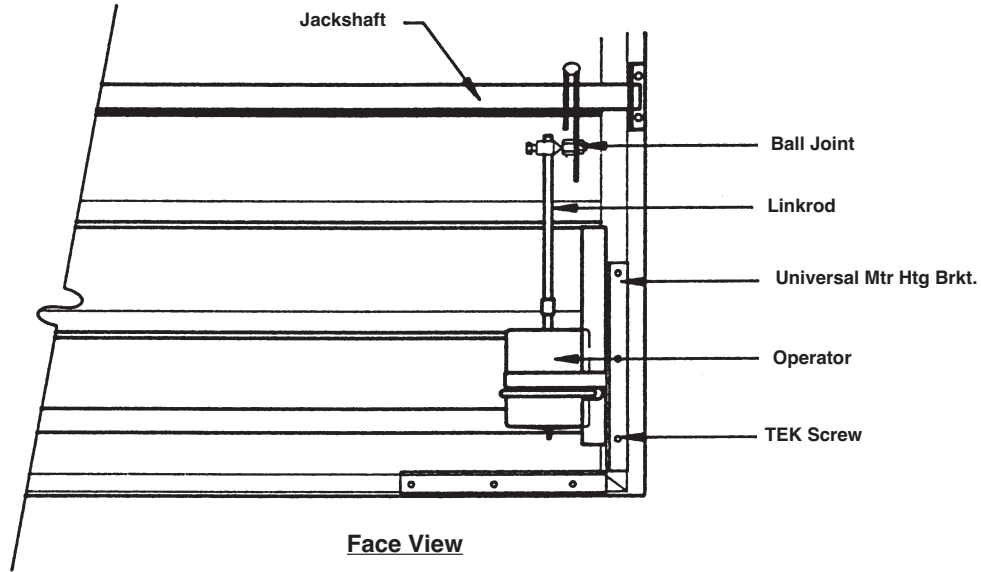
PARTIAL REAR ELEVATION

N.T.S.

ELEVATION

DWG. NO.  
60-020687-00A

# PNEUMATIC OPERATOR

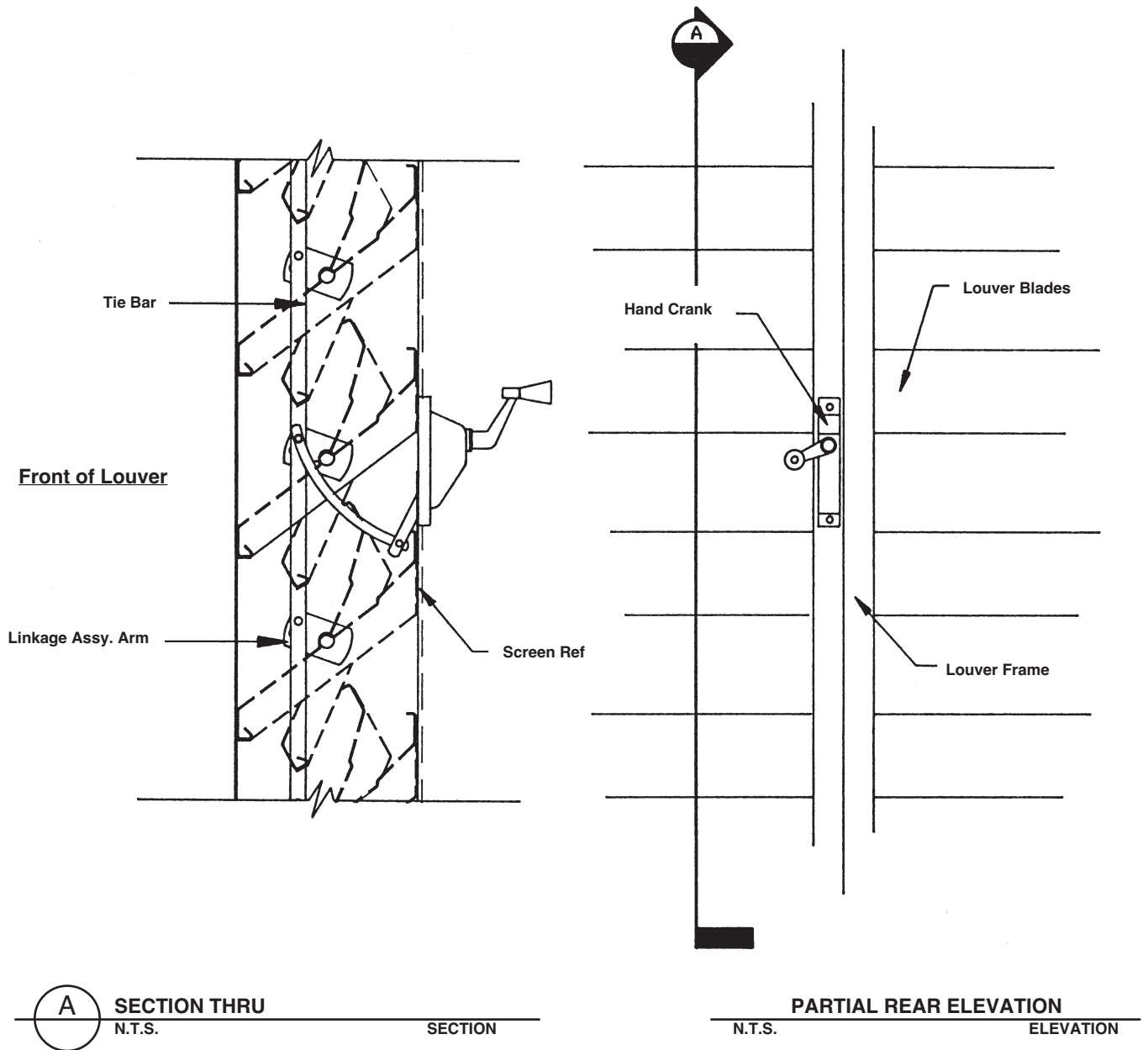


DWG. NO.  
60-020688-00A

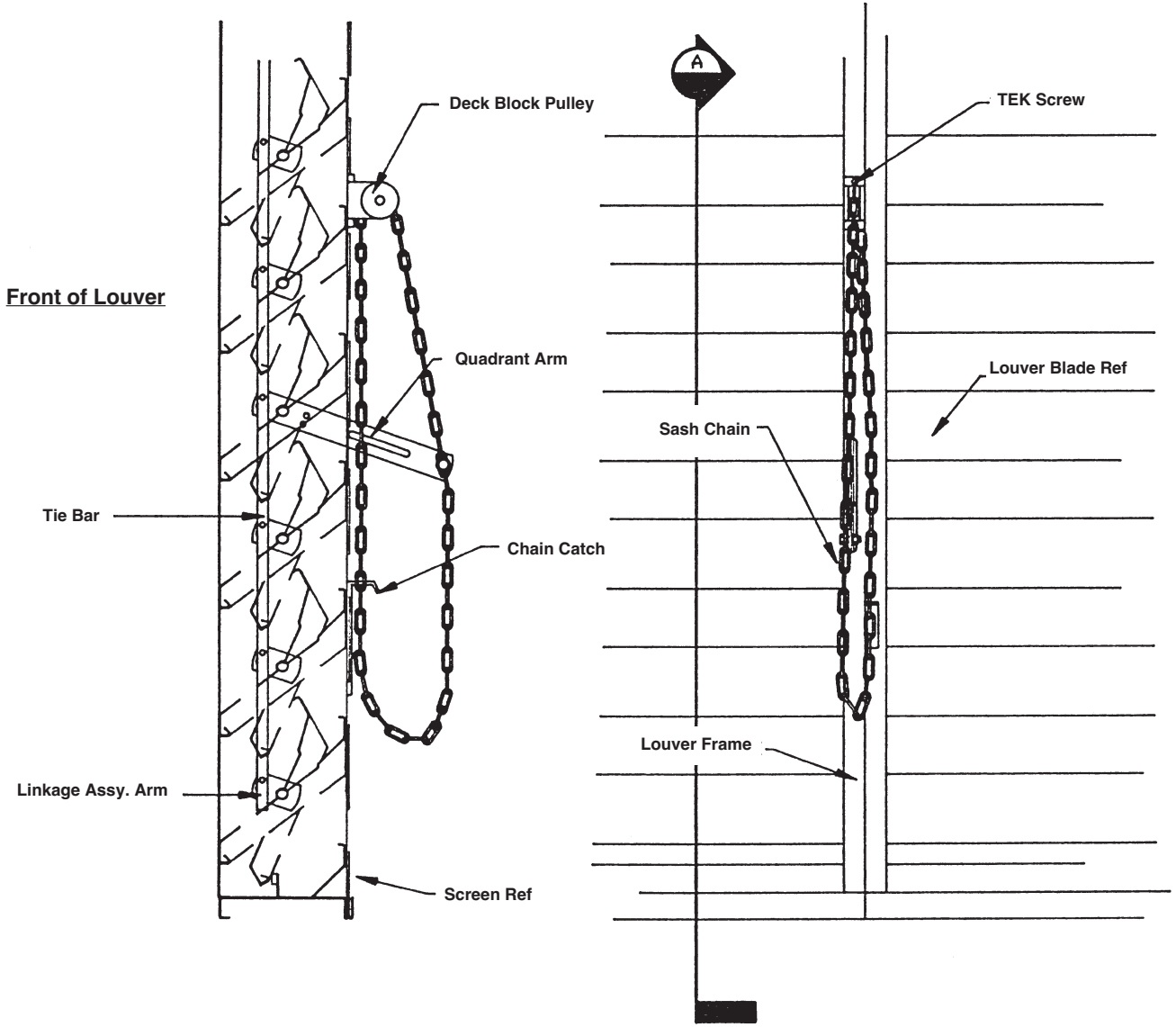


## MOVABLE LOUVER DETAILS

### SMALL HAND CRANK OPERATOR



DWG. NO.  
60-020689-00A



**A** SECTION THRU  
 N.T.S. SECTION

PARTIAL REAR ELEVATION  
 N.T.S. ELEVATION

DWG. NO.  
 60-020690-00A