

445RDABL

Adjustable Louver Drainable Blade

Extruded Aluminum

WebREPS
800-810-3280

RELIABLE

APPLICATION

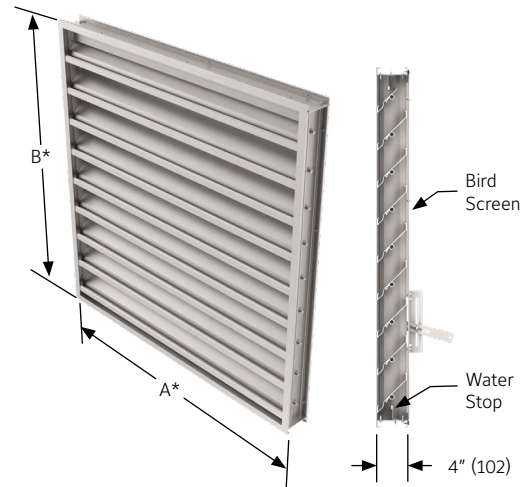
The 445RDABL is a 4" deep adjustable louver with low water penetration and pressure drop. It has ideal suitability for air intake and exhaust applications that require tight shutoff.

STANDARD CONSTRUCTION

Frame	4" (102) deep, 6063T6 extruded aluminum with .080" (2) nominal wall thickness. Downspouts and caulking slots provided.
Blades	6063T6 extruded aluminum with .080" (2) nominal wall thickness. Drainable blades are positioned at 45° angle and spaced approximately 5" (127) center to center.
Screen	3/4" x .051" (19 x 1.3) expanded, flattened aluminum bird screen in removable frame. Screen adds approximately 1/2" (13) to louver depth.
Seals	Extruded Santoprene blade seals. Compressible aluminum jamb seals.
Linkage	Concealed in frame.
Bearings	Stainless steel sleeve pressed into frame.
Axles	1/2" (13) plated steel hex.
Actuator	Locking louver quadrant.
Finish	Mill.
Minimum Size	12" w x 12" h (305 x 305).
Approximate Shipping Weight	6 lbs. per sq. ft.
Maximum Factory Assembly Size	Shall be 60" w X 96" h (1524 x 2438) (without seals) or 48" W X 96" H (1219 x 2438) (with seals). Louvers larger than the maximum factory assembly size will require field assembly of smaller sections.

FEATURES

- High free area, low water penetration and low pressure drop
- Ideally suited for air intake and exhaust applications that require tight shutoff
- Combines architectural styling with performance
- All aluminum construction for low maintenance and high resistance to corrosion
- Blade and jamb seals provide tight closure



YEAR LIMITED WARRANTY

ISO9001 CERTIFIED

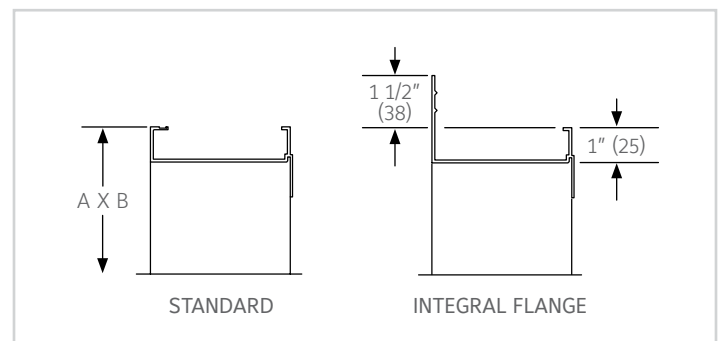
VARIATIONS

Variations to the basic design of this louver are available at additional cost. They include:

- Extended sill
- Hinged frame
- Front or rear security bars
- Filter racks
- Blade edge and jamb seals
- A variety of bird and insect screens
- Optional finishes available at additional cost: Prime coat, 50% PVDF (modified fluoropolymer), Epoxy, Pearledize, 70% PVDF, Clear and Anodized finishes. (Some variation in anodize color consistency is possible)
- Manual, electric or pneumatic actuators

Consult Reliable for other special requirements.

FRAME CONSTRUCTION



Note:

- Dimensions in inches, parenthesis () indicate millimeters.
- Units can be furnished actual size or with size deducts.

PERFORMANCE DATA

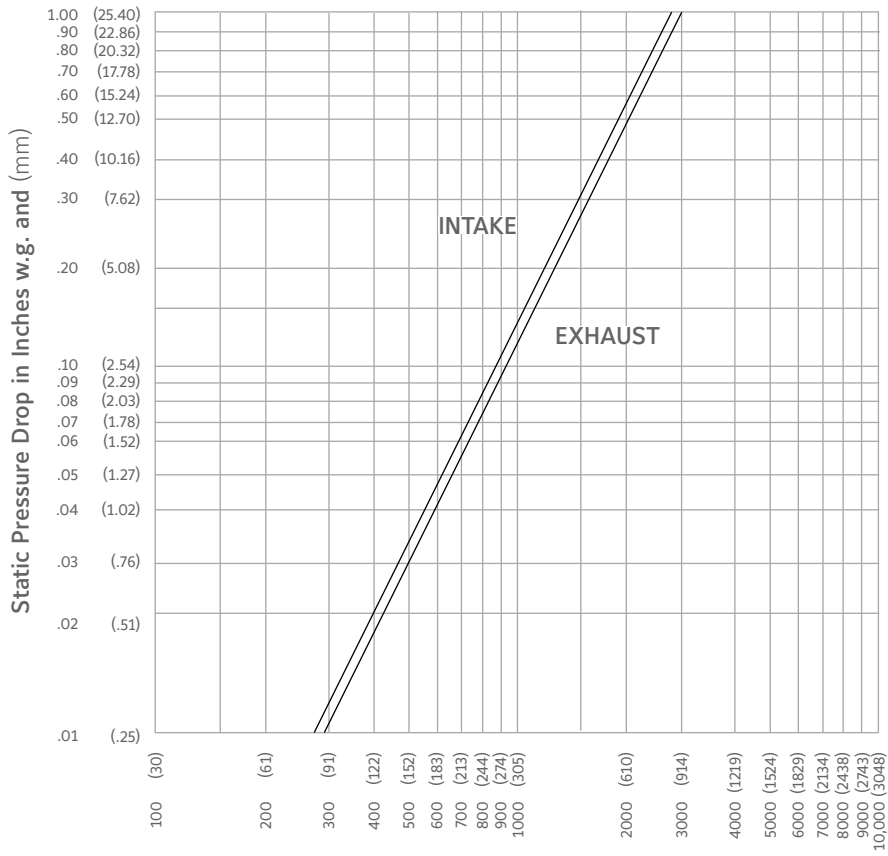
AMCA Standard 500 provides a reasonable basis for testing and rating louvers. Testing to AMCA 500 is performed under a certain set of laboratory conditions. This does not guarantee that other conditions will not occur in the actual environment where louvers must operate.

The louver system should be designed with a reasonable safety factor for louver performance. To ensure protection from water carryover, design with a performance level somewhat below maximum desired pressure drop and .01 oz./sq. ft. of water penetration.

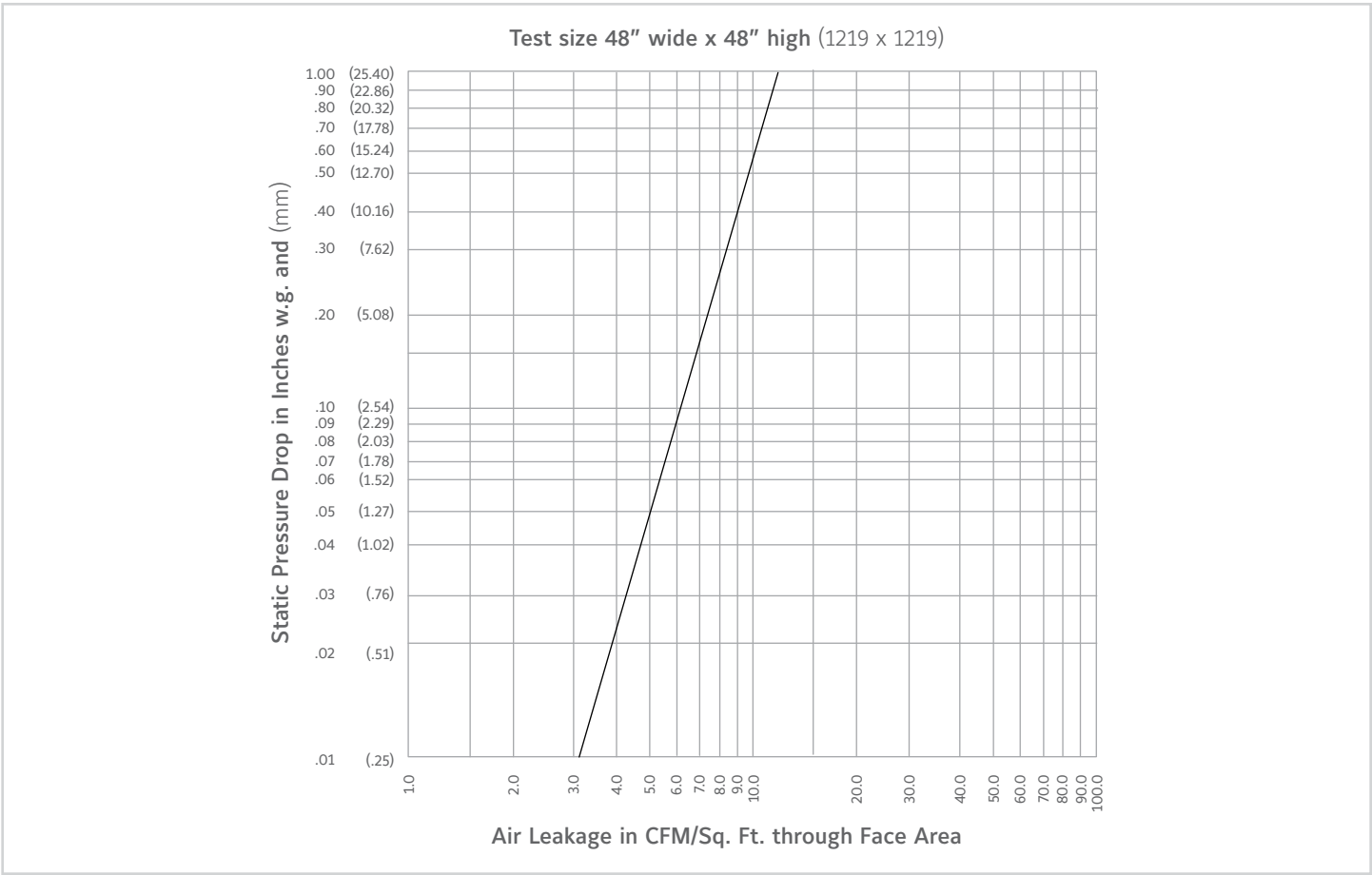
FREE AREA GUIDE

Free Area Guide shows free area in ft² and m² for various sizes of 445RDABL.

		Width – Inches and Meters														
		12 0.30	18 0.46	24 0.61	30 0.76	36 0.91	42 1.07	48 1.22	54 1.37	60 1.52	66 1.68	72 1.83	78 1.96	84 2.13	90 2.29	96 2.44
Height – Inches and Meters	12 0.30	0.15 0.01	0.24 0.02	0.33 0.03	0.42 0.04	0.51 0.05	0.60 0.06	0.69 0.06	0.78 0.07	0.87 0.08	0.96 0.09	1.05 0.10	1.14 0.10	1.23 0.11	1.32 0.12	1.41 0.13
	18 0.46	0.37 0.03	0.59 0.05	0.81 0.08	1.03 0.10	1.25 0.11	1.48 0.14	1.70 0.16	1.92 0.18	2.14 0.20	2.37 0.22	2.59 0.24	2.81 0.26	3.03 0.28	3.26 0.30	3.48 0.32
	24 0.61	0.58 0.05	0.94 0.09	1.29 0.12	1.65 0.15	2.00 0.19	2.35 0.22	2.71 0.25	3.06 0.28	3.42 0.32	3.77 0.35	4.13 0.38	4.48 0.42	4.83 0.45	5.19 0.48	5.54 0.51
	30 0.76	0.61 0.06	0.97 0.09	1.34 0.12	1.71 0.16	2.08 0.19	2.45 0.23	2.81 0.26	3.18 0.30	3.55 0.33	3.92 0.36	4.29 0.40	4.66 0.43	5.02 0.47	5.39 0.50	5.76 0.54
	36 0.91	0.82 0.08	1.32 0.12	1.82 0.17	2.32 0.22	2.82 0.26	3.32 0.31	3.82 0.35	4.32 0.40	4.82 0.45	5.32 0.49	5.82 0.54	6.32 0.59	6.82 0.63	7.32 0.68	7.82 0.73
	42 1.07	1.04 0.10	1.67 0.16	2.30 0.21	2.94 0.27	3.57 0.33	4.20 0.39	4.83 0.45	5.46 0.51	6.10 0.57	6.73 0.63	7.36 0.68	7.99 0.74	8.62 0.80	9.26 0.86	9.89 0.92
	48 1.22	1.26 0.12	2.02 0.19	2.79 0.26	3.55 0.33	4.31 0.40	5.08 0.47	5.84 0.54	6.61 0.61	7.37 0.68	8.13 0.76	8.90 0.82	9.66 0.89	10.43 0.97	11.19 1.04	11.95 1.11
	54 1.37	1.47 0.14	2.37 0.22	3.27 0.30	4.16 0.37	5.05 0.47	5.95 0.55	6.85 0.64	7.75 0.72	8.64 0.80	9.54 0.89	10.43 0.97	11.33 1.05	12.23 1.14	13.13 1.22	14.02 1.30
	60 1.52	1.50 0.14	2.41 0.22	3.32 0.31	4.23 0.39	5.14 0.48	6.05 0.56	6.96 0.65	7.87 0.73	8.78 0.82	9.69 0.90	10.60 0.98	11.51 1.07	12.42 1.15	13.33 1.24	14.24 1.32
	66 1.68	1.71 0.16	2.76 0.26	3.80 0.35	4.84 0.45	5.88 0.55	6.92 0.64	7.96 0.74	9.01 0.84	10.05 0.93	11.09 1.03	12.13 1.13	13.17 1.22	14.22 1.32	15.26 1.42	16.30 1.51
	72 1.83	1.93 0.18	3.11 0.29	4.28 0.40	5.45 0.50	6.63 0.62	7.80 0.72	8.97 0.83	10.15 0.94	11.32 1.05	12.50 1.16	13.67 1.27	14.85 1.38	16.02 1.49	17.19 1.60	18.36 1.71
	78 1.96	2.15 0.20	3.45 0.32	4.76 0.44	6.07 0.56	7.37 0.68	8.68 0.81	9.98 0.93	11.29 1.05	12.60 1.17	13.90 1.29	15.21 1.39	16.51 1.53	17.82 1.65	19.12 1.77	20.43 1.90
	84 2.13	2.37 0.22	3.80 0.35	5.24 0.49	6.68 0.62	8.12 0.75	9.55 0.89	10.99 1.02	12.43 1.15	13.87 1.29	15.31 1.42	16.74 1.56	18.18 1.69	19.62 1.82	21.06 1.96	22.49 2.09
	90 2.29	2.39 0.22	3.84 0.36	5.29 0.49	6.74 0.63	8.20 0.76	9.65 0.90	11.10 1.03	12.55 1.16	14.00 1.30	15.45 1.44	16.91 1.57	18.36 1.71	19.81 1.84	21.26 1.98	22.71 2.11
	96 2.44	2.61 0.24	4.19 0.39	5.77 0.53	7.36 0.68	8.94 0.83	10.52 0.98	12.11 1.12	13.69 1.27	15.27 1.42	16.86 1.57	18.44 1.71	20.03 1.86	21.61 1.98	23.19 2.16	24.78 2.30

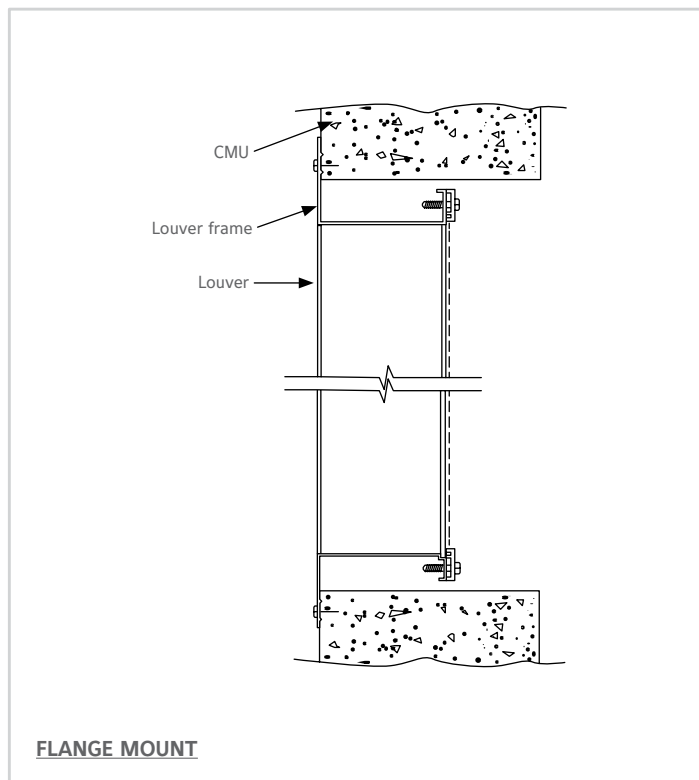
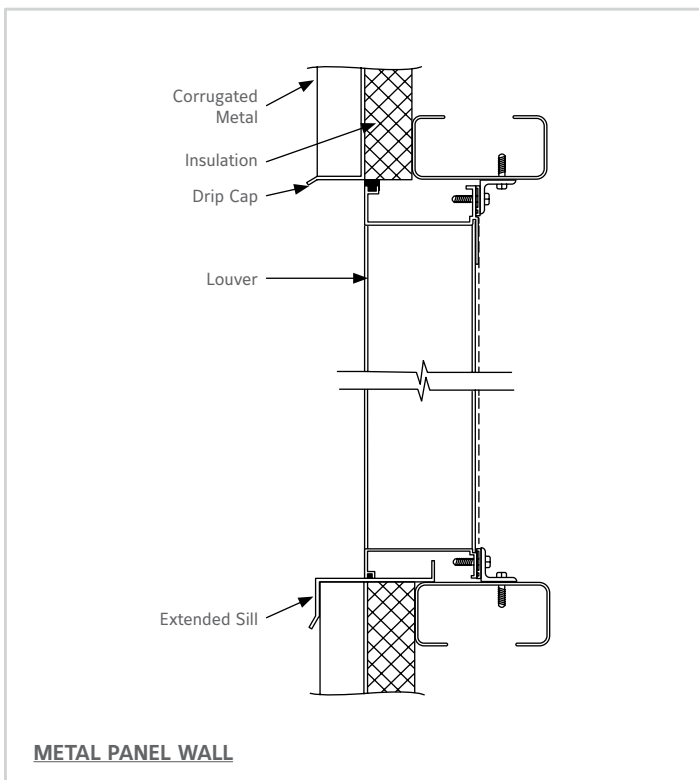
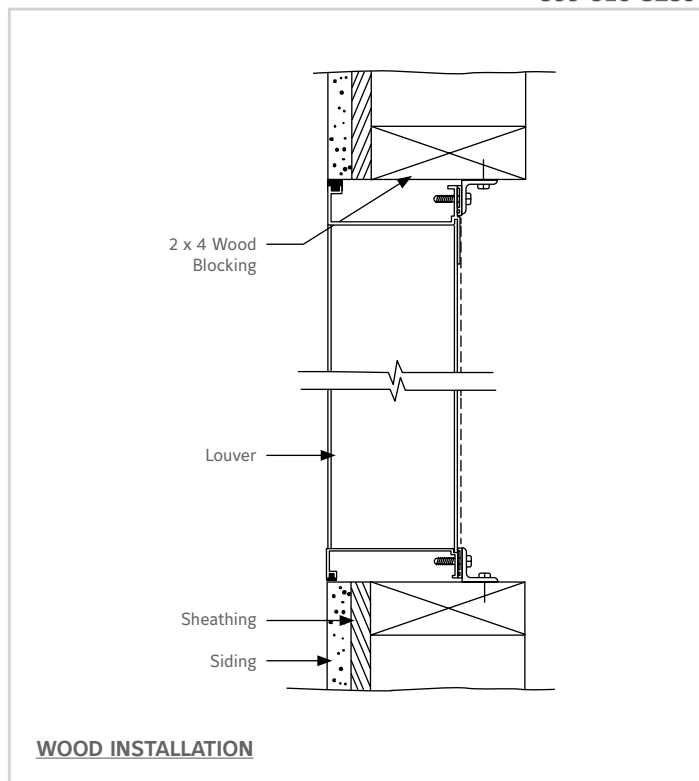
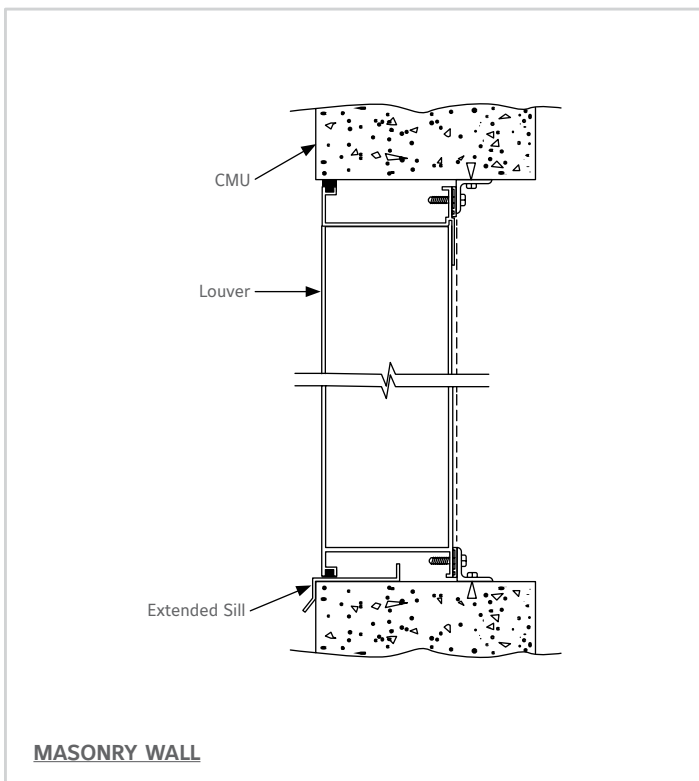


Ratings do not include the effect of a bird screen.





TYPICAL INSTALLATION DETAILS



Accessories at additional cost.



SUGGESTED SPECIFICATION

Furnish and install louvers as hereinafter specified where shown on plans or as described in schedules. Louvers shall be adjustable type entirely contained within a 4" (102) frame. Louver components (heads, jambs, sills, blades & mullions) shall be factory assembled by the louver manufacturer. Louver sizes too large for shipping shall be built up by the contractor from factory assembled louver sections to provide overall sizes required. Louver design shall incorporate structural supports required to withstand a wind load of 30 lbs. per sq. ft. (1.44kPa) (equivalent of a 110 mph wind [177 KPH] - specifier may substitute any loading required).

Louvers shall be Reliable Model 445RDABL construction as follows:

Frame: .080" (2) wall thickness.

Blades: .080" (2) wall thickness at 45° angle and spaced approximately 5" (127) center to center.

Screen: 3/4" x .051" (19 x 1.3) expanded, flattened aluminum bird screen in removable frame.

Finish: Select finish specification from Reliable Finishes Brochure.

LINKS TO IMPORTANT DOCUMENTS

Document Title
Finishes and Color Guide
Limited Warranty Document



1300 Enterprise Road, P.O. Box
580, Geneva, Alabama 36340
Tel: 334-684-3621
Tel: 800-624-3914
Fax: 800-508-1469