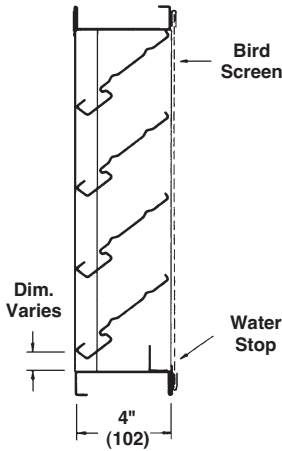
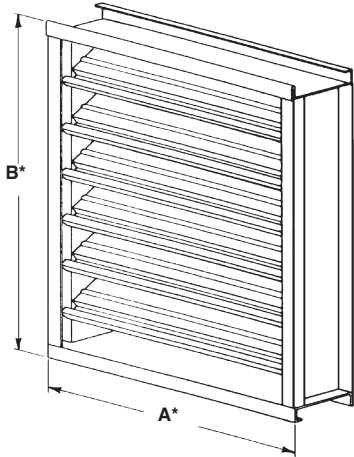




Web REPS 800-810-3280 x 101

4375FD HIGH PERFORMANCE STATIONARY LOUVER DRAINABLE BLADE ROLL FORMED STEEL



STANDARD CONSTRUCTION

FRAME
4" (102) deep, 18 (1.3) gage galvanized steel.

BLADES
18 (1.3) gage galvanized steel. Drainable blades are positioned at 37 1/2° angle and spaced approximately 3 1/2" (89) center to center.

SCREEN
1/2" mesh x 19 (1.1) gage galvanized bird screen in removable frame. Screen adds approximately 1/2" (13) to louver depth.

FINISH
Mill.

MINIMUM SIZE
12"w x 12"h (305 x 305).

APPROXIMATE SHIPPING WEIGHT
7 lbs. per sq. ft

MAXIMUM FACTORY ASSEMBLY SIZE
120"w x 90"h (3048 x 2286) or 90"w x 120"h (2286 x 3048)

Louvers larger than the maximum factory assembly size will require field assembly of smaller sections.

FEATURES

The 4375FD offers:

- Published performance ratings based on testing in accordance with AMCA Publication 511.
- High free area, low pressure drop, low water penetration.
- Drain gutters in each blade and downspouts in jambs and mullions to drain water from louver for minimum water cascade from blade to blade.
- Architecturally styled hidden mullions allowing continuous line appearance up to 120".
- Economical galvanized steel construction.

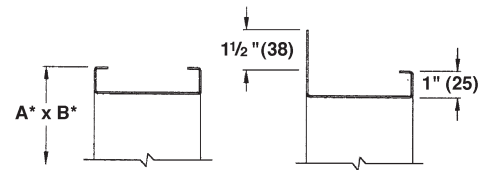
VARIATIONS

Variations to the basic design of this louver are available at additional cost. They include:

- Extended sill.
- Hinged frame.
- Front or rear security bars.
- Filter racks.
- A variety of bird and insect screens.
- Selection of finishes: baked enamel (modified fluoropolymer), epoxy, Kynar, Acrodize and prime coat.

Consult Reliable for other special requirements.

FRAME CONSTRUCTION



STANDARD

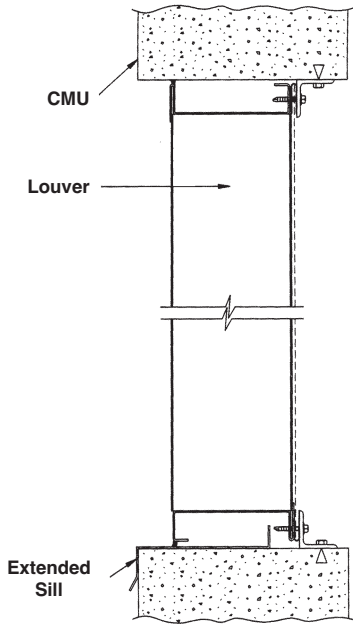
FLANGE

Dimensions in inches, parenthesis () indicate millimeters.

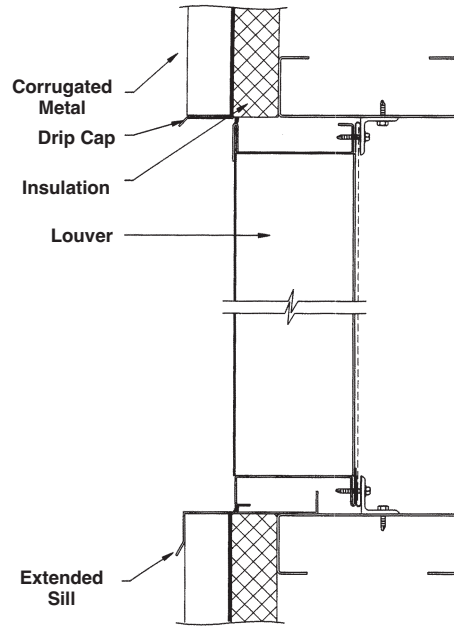
*Units furnished 1/4" (6) smaller than given opening dimensions.

TAG	QTY.	SIZE		FRAME	VARIATIONS
		A*-WIDE	B*-HIGH		
PROJECT ARCH./ENGR. REPRESENTATIVE			LOCATION CONTRACTOR DATE		

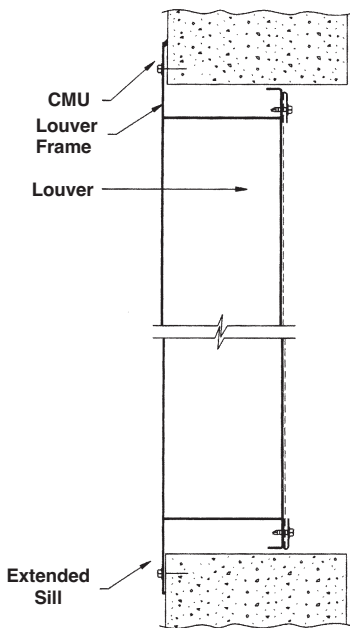
Masonry Wall



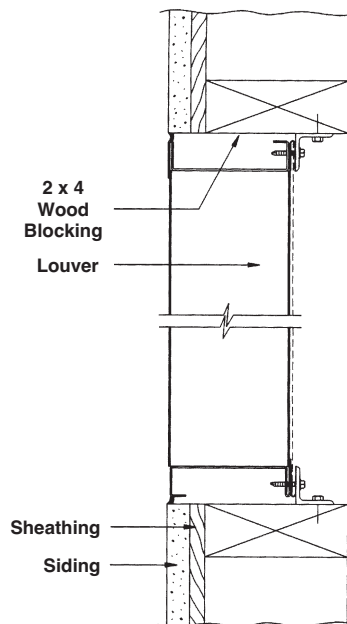
Metal Panel Wall



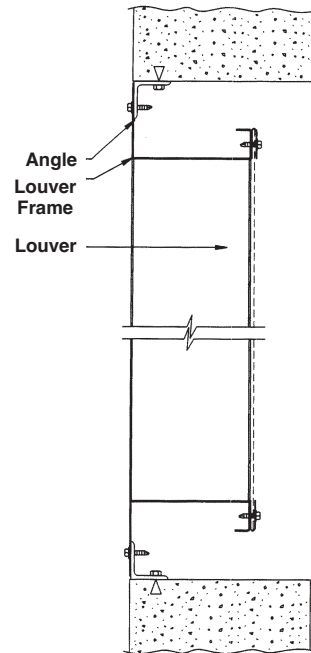
Flange Mount



Wood Installation

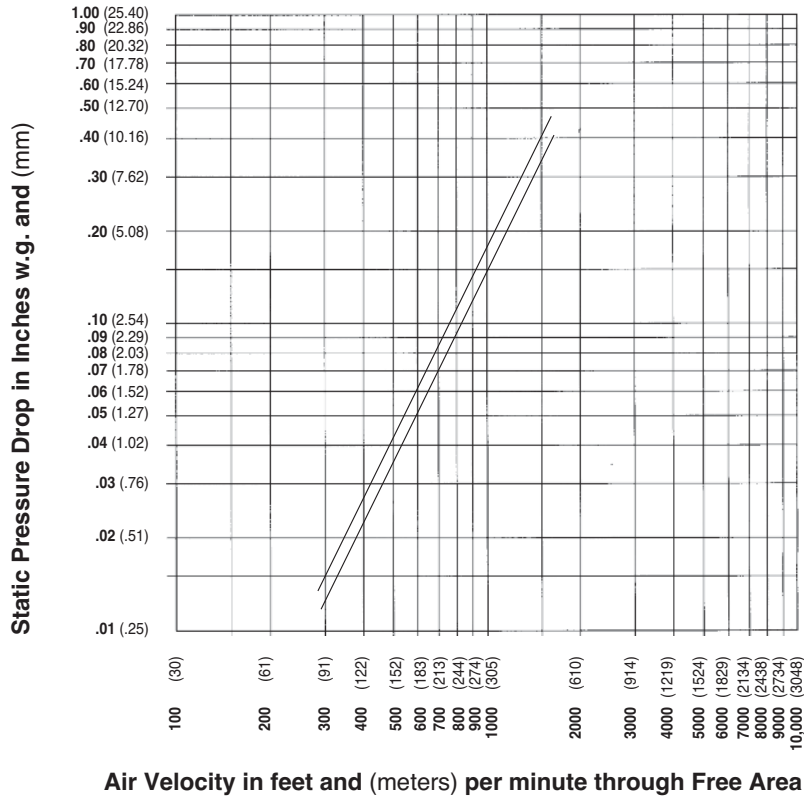


Angle Subframe



*Accessories at additional cost.

PRESSURE DROP

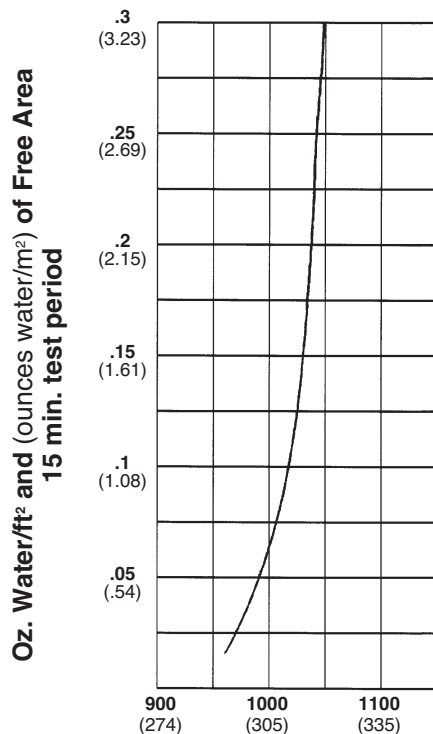


Ratings do not include the effect of a bird screen.

WATER PENETRATION GRAPH

Test size 48" x 48"

Beginning point of water penetration at .01 oz./sq. ft. is 961 fpm (274 m/min).



Reliable Products certifies that the 4375FD Louvers shown herein are licensed to bear the AMCA Seal. The ratings shown are based on tests and procedures performed in accordance with AMCA Publication 511 and comply with the requirements of the AMCA Certified Ratings Program. The AMCA Certified Ratings Seal applies to air performance ratings and water penetration ratings only.

