



EXTRUDED ALUMINUM LOUVER

MODEL: 4-SRCF

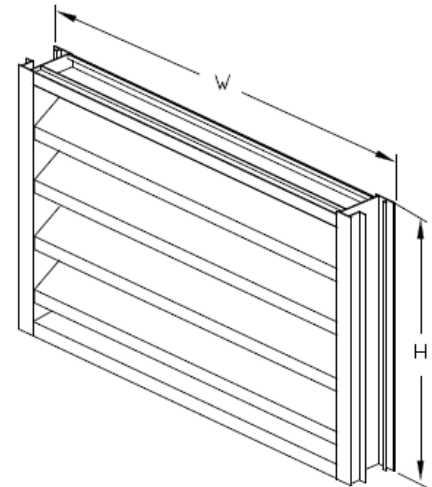
IMPACT RESISTANT CHANNEL FRAME LOUVER

Miami Dade County Approved-NOA No. 13-0207.04



APPLICATION

The 4-SRCF Stationary Louver with Channel Frame is a 4" deep louver for the protection of high air intake velocities and exhaust in building exterior walls. The 4-SRCF is a capable louver with AMCA STD 500 Performance Data allowing designers to select.



SPECIFICATIONS

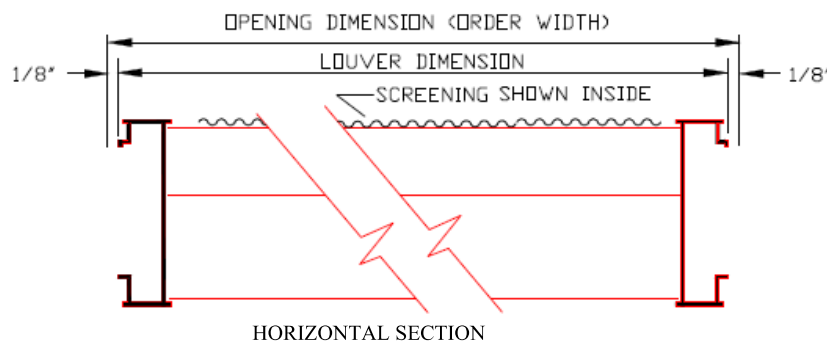
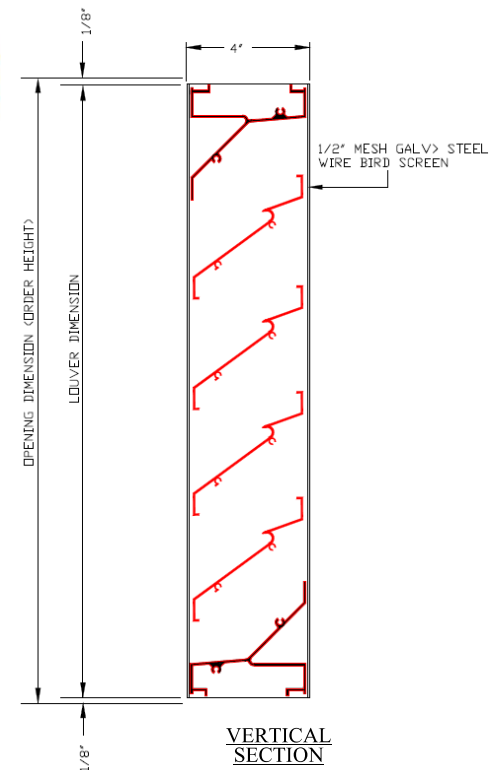
- Frame:** 0.081 thick extruded aluminum
6063-T5 mill finish
- Blade:** 0.081 thick extruded aluminum
6063-T5 mill finish
- Blade Spacing:** Approximately 3-1/4" center to center (except at head and sills)
- Fasteners:** 10" x 3/4" tek screws
- Blade Angle:** 36°
- Screen:** Bird screen
1/2" x 1/2" galvanized steel
- Flange:** 1-1/4"

OPTIONS

- Insect Screen 1/16" x 1/16" aluminum
- Bird Screen 1/2" x 1/2" aluminum
- Stainless Steel Frame, Steel Frame, ~~Copper Frame~~

- Finish:** Clear Anodized → Minimum
- Color Anodized → Quantities may
- Powder Coat Paint → Apply
- Baked Enamel Paint →

Size Limited to 48" x 48"



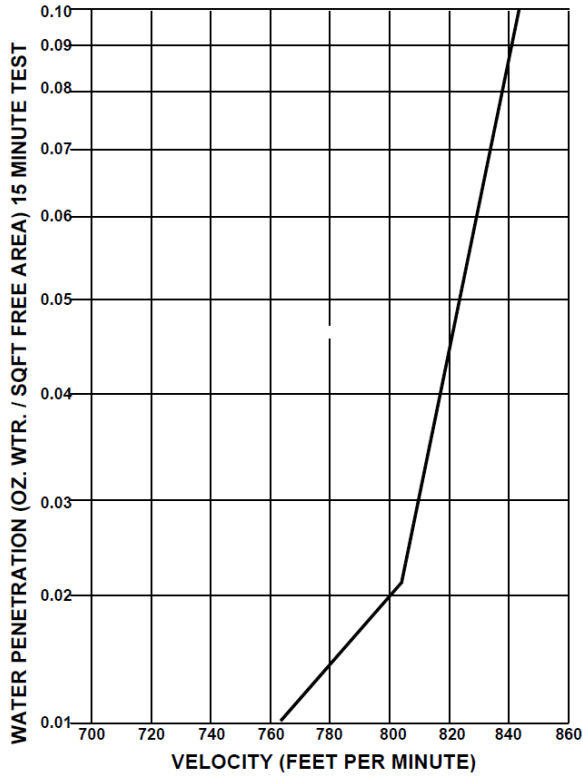


EXTRUDED ALUMINUM LOUVER

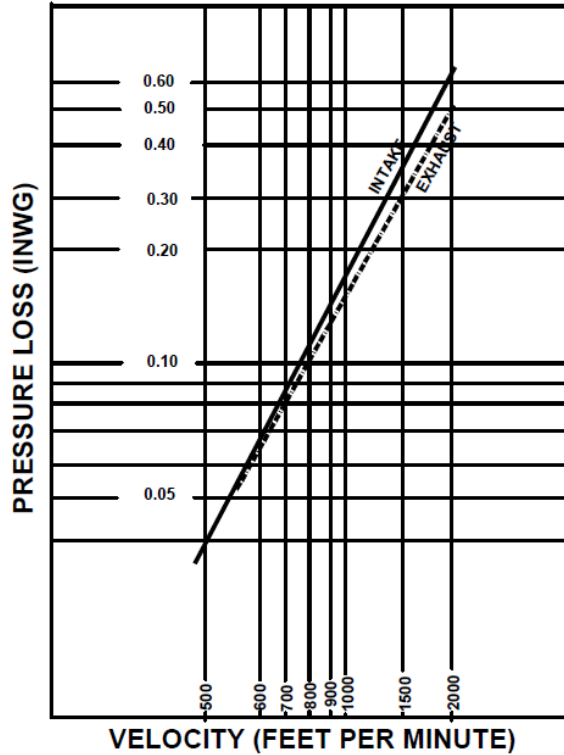
Test on a 48"x48' size louver

MODEL: 4-SRCF

WATER PENETRATION TEST



AIR RESISTANCE TEST



The beginning point of water penetration is 713 FPM @ 0.01 OZ/SQ.FT. of free area.

Performance testing in accordance with AMCA STD 500

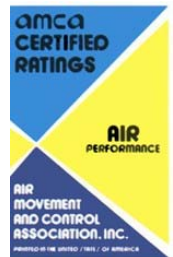
Louver size determination

air flow volume	cfm /	free area velocity @ beginning point of water penetration	=	fpm	=	ft ²	Required Louver Free Area
-----------------	-------	---	---	-----	---	-----------------	---------------------------

Select louver size from Free Area Chart below, based on required louver free area above
Determine pressure drop from Pressure Drop Chart based on required louver free area above

FREE AREA IN SQ. FT.
WIDTH

	12"	18"	24"	30"	36"	42"	48"	54"
12"	0.24	0.41	0.57	0.74	0.90	1.06	1.23	1.47
24"	0.65	1.09	1.54	1.93	2.46	2.91	3.35	3.75
30"	0.81	1.30	1.84	2.37	2.93	3.47	3.99	4.46
36"	0.99	1.75	2.46	3.18	3.93	4.64	5.34	5.98
42"	1.22	2.16	3.05	3.94	4.86	5.75	6.62	7.41
48"	1.43	2.60	3.67	4.74	5.86	6.93	7.97	8.93
54"	1.60	2.81	3.97	5.12	6.33	7.48	8.61	9.64
60"	1.80	3.26	4.59	5.93	7.33	8.66	9.96	11.16
66"	1.90	3.70	5.22	6.74	8.32	9.84	11.32	12.68
72"	2.20	3.91	5.51	7.12	8.79	10.40	11.96	13.39
78"	2.43	4.35	6.13	7.92	9.79	11.57	13.31	14.91
84"	2.61	4.77	6.72	8.68	10.72	12.68	14.59	16.34
90"	2.87	5.21	7.35	9.49	11.72	13.86	15.94	17.85



EXTRUDED ALUMINUM LOUVER

MODEL: 4-SRCF

IMPACT RESISTANT LOUVER
Miami Dade Approved-NOA No. 13-0207.04

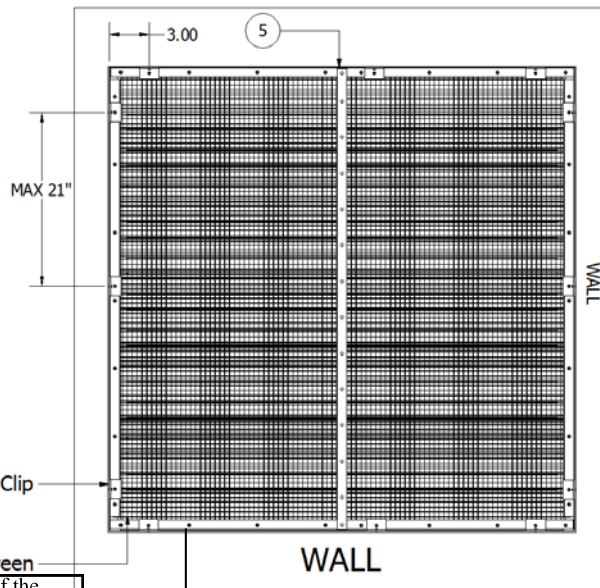


WebREPS
1-800-810-3280

INSTALLATION INSTRUCTION

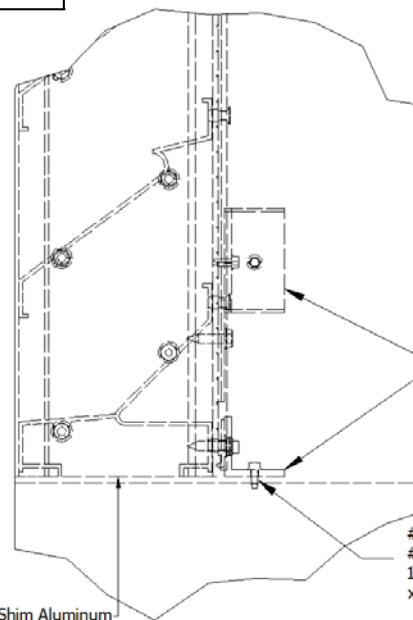
APPLICATION

The 4-SRCF Louver is a Miami-Dade Qualified and Florida Product Approved. It must be installed in accordance with the installation instruction shown below. 4-SRCF is structurally calculated to withstand positive and negative wind-loads up to ± 100 PSF.



The screen secures to the interior of the frame using snap-fit extruded aluminum stops and #10x3/4" long self-tapping hex head screws. The screws located at the head, sill and jambs are located at each end and spaced 7" on center

Back view of the 4-SRCF installs into the wall

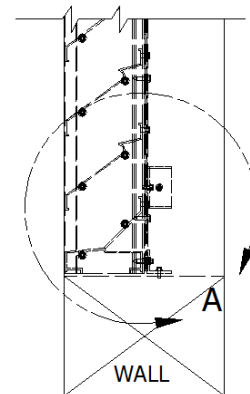
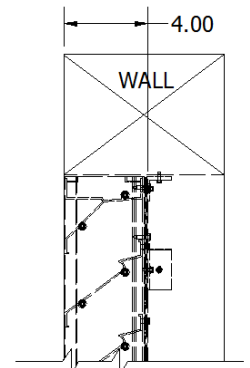


DETAIL A

FASTENER QUANTITIES

MAX INSIDE DIMENSION L x W	NO. FASTENERS - SUBSTRATE TYPE		
	WOOD	CONC.	STEEL
18"x18"	8	8	8
24"x24"	8	8	8
30"x30"	12	12	12
36"x36"	12	12	12
42"x42"	12	12	12
48"x48"	12	12	12

FASTENER SPACING: 3" FROM CORNERS
MAX 21" O.C.



Side view

MIAMI-DADE COUNTY
APPROVED

231 Commerce Dr. Montgomeryville, PA 18936
Tel: 215-412-4445 Fax: 215-412-4409
Email: lloydind@firedamper.com

138 Industrial Loop West, Orange Park, FL 32073
Tel: 904-541-1655 Fax: 904-541-1657
Email: lloydind1@bellsouth.net

B1, 4/F., Luen Ming Hing Factory Building
36 Mok Cheong St.,
To Kwa Wan, Kowloon, H. K.
Tel: 852-2760-4188 Fax: 852-2760-4177
Email: tatanlexyim@lloydasia.com



Lloyd Industries Inc. 2013