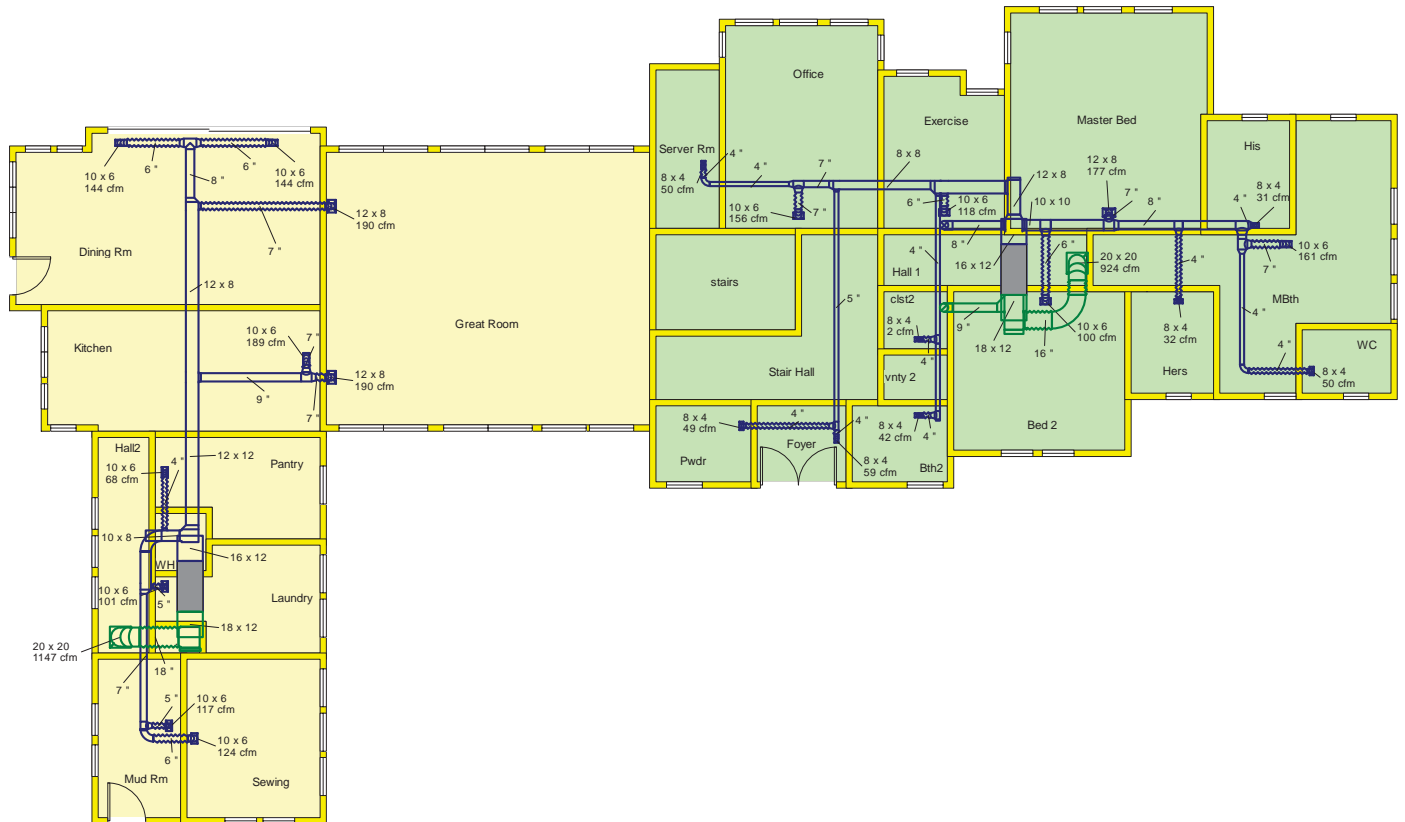




Sheet 1



Job #:
Performed by Josh Putman for:

Fredericksburg, TX 78624

WebREPS, LLC

1892 Commerce Avenue
Vero Beach, FL 32960

Phone: 800-810-3280 Fax: 888-971-2999

www.webrepswholesale.com sales@webrepshvac.com

Scale: 1 : 182

Page 1

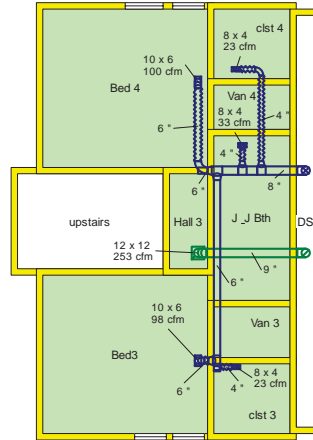
Right-Suite® Universal 2013
13.0.06 RSU16998

2014-Feb-12 11:33:03

...a Homes\McCaslin Residence 2.rup



2nd Floor



Job #:
Performed by Josh Putman for:

Fredericksburg, TX 78624

WebREPS, LLC

1892 Commerce Avenue
Vero Beach, FL 32960

Phone: 800-810-3280 Fax: 888-971-2999

www.webrepswholesale.com sales@webrepshvac.com

Scale: 1 : 182

Page 2
Right-Suite® Universal 2013
13.0.06 RSU16998
2014-Feb-12 11:33:03

...a Homes\McCaslin Residence 2.rup



Duct System Summary

AH1

WebREPS, LLC

Job:
 Date: Nov 07, 2013
 By: Josh Putman

1892 Commerce Avenue, Vero Beach, FL 32960 Phone: 800-810-3280 Fax: 888-971-2999 Email: sales@webrepshvac.com Web: www.webrepswholesale.com License: CAC0547...

Project Information

For:
 Fredericksburg, TX 78624

	Heating	Cooling
External static pressure	0.60 in H2O	0.60 in H2O
Pressure losses	0.29 in H2O	0.29 in H2O
Available static pressure	0.31 in H2O	0.31 in H2O
Supply / return available pressure	0.199 / 0.111 in H2O	0.199 / 0.111 in H2O
Lowest friction rate	0.091 in/100ft	0.091 in/100ft
Actual air flow	1147 cfm	1147 cfm
Total effective length (TEL)		340 ft

Supply Branch Detail Table

Name	Design (Btuh)	Htg (cfm)	Clg (cfm)	Design FR	Diam (in)	H x W (in)	Duct Matl	Actual Ln (ft)	Ftg.Eqv Ln (ft)	Trunk
Bed 2	c 2021	97	100	0.128	6.0	0x0	VIFx	10.0	145.0	st17
Bed 4	c 2010	73	100	0.100	6.0	0x0	VIFx	34.5	165.0	st8
Bed3	c 1980	71	98	0.096	6.0	0x0	VIFx	42.5	165.0	st7
Bth2	h 1052	42	31	0.110	4.0	0x0	VIFx	30.0	150.0	st16
Exercise	c 2382	63	118	0.092	6.0	0x0	VIFx	12.0	205.0	st12
Foyer	h 1490	59	39	0.105	4.0	0x0	VIFx	38.5	150.0	st14
Hers	h 806	32	17	0.113	4.0	0x0	VIFx	20.5	155.0	st17A
His	h 772	31	16	0.113	4.0	0x0	VIFx	20.5	155.0	st17A
J & J Bth	h 824	33	24	0.101	4.0	0x0	VIFx	26.0	170.0	st11
MBth	h 4040	161	138	0.111	7.0	0x0	VIFx	24.5	155.0	st17A
Master Bed	c 3559	167	177	0.128	7.0	0x0	VIFx	10.0	145.0	st17
Office	c 3151	124	156	0.114	7.0	0x0	VIFx	24.0	150.0	st13
Pwdr	h 1221	49	32	0.102	4.0	0x0	VIFx	45.0	150.0	st14
Server Rm	c 1002	49	50	0.104	4.0	0x0	VIFx	30.5	160.0	st13A
WC	h 1248	50	20	0.099	4.0	0x0	VIFx	36.5	165.0	st17B
clst 3	h 582	23	14	0.095	4.0	0x0	VIFx	43.0	165.0	st7
clst 4	h 577	23	16	0.091	4.0	0x0	VIFx	32.5	185.0	st11
clst2	c 34	1	2	0.114	4.0	0x0	VIFx	24.0	150.0	st16

Supply Trunk Detail Table

Name	Trunk Type	Htg (cfm)	Clg (cfm)	Design FR	Veloc (fpm)	Diam (in)	H x W (in)	Duct Material	Trunk
st13A	Peak AVF	49	50	0.104	570	4.0	0 x 0	ShtMetl	st13
st17B	Peak AVF	50	20	0.099	569	4.0	0 x 0	ShtMetl	st17A
st11	Peak AVF	223	253	0.091	724	8.0	0 x 0	ShtMetl	st2
st13	Peak AVF	172	206	0.104	771	7.0	0 x 0	ShtMetl	st15
st15	Peak AVF	280	277	0.102	630	10.0	8 x 8	ShtMetl	st12
st14	Peak AVF	108	70	0.102	791	5.0	0 x 0	ShtMetl	st15
st12	Peak AVF	386	427	0.092	640	10.8	8 x 12	ShtMetl	st2
st17A	Peak AVF	273	190	0.099	783	8.0	0 x 0	ShtMetl	st17
st7	Peak AVF	95	112	0.095	573	6.0	0 x 0	ShtMetl	st11
st8	Peak AVF	73	100	0.100	508	6.0	0 x 0	ShtMetl	st11
st16	Peak AVF	43	32	0.110	494	4.0	0 x 0	ShtMetl	st12
st17	Peak AVF	538	467	0.099	774	12.0	10 x 10	ShtMetl	st2
st2	Peak AVF	1147	1147	0.091	860	16.0	12 x 16	ShtMetl	

Return Branch Detail Table

Name	Grill Size (in)	Htg (cfm)	Clg (cfm)	TEL (ft)	Design FR	Veloc (fpm)	Diam (in)	H x W (in)	Stud/Joist Opening (in)	Duct Matl	Trunk
rb1	0x0	924	894	106.5	0.105	662	16.0	0x 0		VIFx	rt2
rb3	0x0	223	253	122.0	0.091	572	9.0	0x 0		ShMt	rt2

Return Trunk Detail Table

Name	Trunk Type	Htg (cfm)	Clg (cfm)	Design FR	Veloc (fpm)	Diam (in)	H x W (in)	Duct Material	Trunk
rt2	Peak AVF	1147	1147	0.091	765	16.0	12 x 18	ShtMetl	

Project Information

For: Fredericksburg, TX 78624

	Heating	Cooling
External static pressure	0.60 in H2O	0.60 in H2O
Pressure losses	0.29 in H2O	0.29 in H2O
Available static pressure	0.31 in H2O	0.31 in H2O
Supply / return available pressure	0.184 / 0.126 in H2O	0.184 / 0.126 in H2O
Lowest friction rate	0.088 in/100ft	0.088 in/100ft
Actual air flow	1147 cfm	1147 cfm
Total effective length (TEL)	352 ft	

Supply Branch Detail Table

Name	Design (Btuh)	Htg (cfm)	Clg (cfm)	Design FR	Diam (in)	H x W (in)	Duct Matl	Actual Ln (ft)	Ftg.Eqv Ln (ft)	Trunk
Dining Rm	h 3697	144	127	0.098	6.0	0x0	VIFx	38.5	150.0	st5A
Dining Rm-A	h 3697	144	127	0.097	6.0	0x0	VIFx	39.5	150.0	st5A
Great Room	h 4882	190	161	0.115	7.0	0x0	VIFx	25.5	135.0	st6
Great Room-A	h 4882	190	161	0.088	7.0	0x0	VIFx	39.0	170.0	st5
Kitchen	c 3972	100	189	0.115	7.0	0x0	VIFx	25.0	135.0	st6
Laundry	c 2124	69	101	0.102	5.0	0x0	VIFx	11.0	170.0	st3
Mud Rm	h 2987	117	98	0.104	5.0	0x0	VIFx	22.5	155.0	st3A
Pantry	h 1747	68	63	0.103	4.0	0x0	VIFx	9.0	170.0	st3
Sewing	h 3170	124	120	0.102	6.0	0x0	VIFx	25.5	155.0	st3A

Supply Trunk Detail Table

Name	Trunk Type	Htg (cfm)	Clg (cfm)	Design FR	Veloc (fpm)	Diam (in)	H x W (in)	Duct Material	Trunk
st5A	Peak AVF	288	254	0.097	826	8.0	0 x 0	ShtMetl	st5
st5	Peak AVF	479	415	0.088	718	11.0	8 x 12	ShtMetl	st4
st6	Peak AVF	291	350	0.115	793	9.0	0 x 0	ShtMetl	st4
st3	Peak AVF	377	382	0.102	688	10.0	8 x 10	ShtMetl	st1
st3A	Peak AVF	240	218	0.102	899	7.0	0 x 0	ShtMetl	st3
st1	Peak AVF	1147	1147	0.088	860	16.0	12 x 16	ShtMetl	st1
st4	Peak AVF	770	765	0.088	770	14.0	12 x 12	ShtMetl	st1

Return Branch Detail Table

Name	Grill Size (in)	Htg (cfm)	Clg (cfm)	TEL (ft)	Design FR	Veloc (fpm)	Diam (in)	H x W (in)	Stud/Joist Opening (in)	Duct Matl	Trunk
rb2	0x0	1147	1147	142.5	0.088	649	18.0	0x 0		VIFx	rt1

Return Trunk Detail Table

Name	Trunk Type	Htg (cfm)	Clg (cfm)	Design FR	Veloc (fpm)	Diam (in)	H x W (in)	Duct Material	Trunk
rt1	Peak AVF	1147	1147	0.088	765	16.0	12 x 18	ShtMetl	